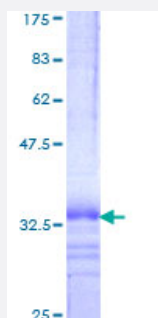


# CKLFSF4 (Human) Recombinant Protein (Q01)

Catalog # H00146223-Q01

Size 25 ug, 10 ug

## Applications



## Specification

<b>Product Description</b>	Human CKLFSF4 partial ORF ( NP_848933, 173 a.a. - 234 a.a.) recombinant protein with GST-tag at N-terminal.
<b>Sequence</b>	QKWRVSVRQQSTNDYIRARTESRDVDSRPEIQRLDTFSYSTNVTVRKKSPTNLLSLNHWQLA
<b>Host</b>	Wheat Germ (in vitro)
<b>Theoretical MW (kDa)</b>	32.56
<b>Preparation Method</b>	<a href="#">in vitro wheat germ expression system</a>
<b>Purification</b>	Glutathione Sepharose 4 Fast Flow
<b>Quality Control Testing</b>	12.5% SDS-PAGE Stained with Coomassie Blue.
<b>Storage Buffer</b>	50 mM Tris-HCl, 10 mM reduced Glutathione, pH=8.0 in the elution buffer.
<b>Storage Instruction</b>	Store at -80°C. Aliquot to avoid repeated freezing and thawing.
<b>Note</b>	Best use within three months from the date of receipt of this protein.

## Applications

- Enzyme-linked Immunoabsorbent Assay
- Western Blot (Recombinant protein)
- Antibody Production
- Protein Array

## Gene Info — CMTM4

**Entrez GeneID** [146223](#)

**GeneBank Accession#** [NM\\_178818](#)

**Protein Accession#** [NP\\_848933](#)

**Gene Name** CMTM4

**Gene Alias** CKLFSF4

**Gene Description** CKLF-like MARVEL transmembrane domain containing 4

**Omim ID** [607887](#)

**Gene Ontology** [Hyperlink](#)

**Gene Summary** This gene belongs to the chemokine-like factor gene superfamily, a novel family that is similar to the chemokine and the transmembrane 4 superfamilies of signaling molecules. This gene is one of several chemokine-like factor genes located in a cluster on chromosome 16. Alternatively spliced transcript variants encoding different isoforms have been identified. [provided by RefSeq]

**Other Designations** chemokine-like factor super family 4|chemokine-like factor superfamily 4