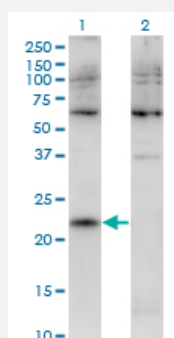


CMTM4 monoclonal antibody (M02), clone 1B9

Catalog # H00146223-M02

Size 100 ug

Applications

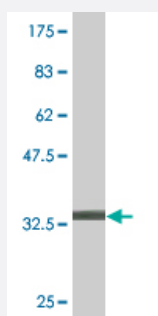


Western Blot (Transfected lysate)

Western Blot analysis of CMTM4 expression in transfected 293T cell line by CMTM4 monoclonal antibody (M02), clone 1B9.

Lane 1: CMTM4 transfected lysate(25.8 kDa).

Lane 2: Non-transfected lysate.



Western Blot detection against Immunogen (32.56 kDa) .

Specification

Product Description	Mouse monoclonal antibody raised against a partial recombinant CMTM4.
Immunogen	CMTM4 (NP_848933, 173 a.a. ~ 234 a.a) partial recombinant protein with GST tag. MW of the GST tag alone is 26 kDa.
Sequence	QKWRVSVRQQSTNDYIRARTESRDVDSRPEIQRLDTFSYSTNVTVRKKSPNTLLSLNHWQLA
Host	Mouse
Reactivity	Human
Isotype	IgG1 Kappa

Quality Control Testing

Antibody Reactive Against Recombinant Protein.
Western Blot detection against Immunogen (32.56 KDa) .

Storage Buffer

In 1x PBS, pH 7.4

Storage Instruction

Store at -20°C or lower. Aliquot to avoid repeated freezing and thawing.

Applications

- Western Blot (Transfected lysate)

Western Blot analysis of CMTM4 expression in transfected 293T cell line by CMTM4 monoclonal antibody (M02), clone 1B9.

Lane 1: CMTM4 transfected lysate(25.8 KDa).

Lane 2: Non-transfected lysate.

[Protocol Download](#)

- Western Blot (Recombinant protein)

[Protocol Download](#)

- ELISA

Gene Info — CMTM4

Entrez GeneID

[146223](#)

GeneBank Accession#

[NM_178818](#)

Protein Accession#

[NP_848933](#)

Gene Name

CMTM4

Gene Alias

CKLFSF4

Gene Description

CKLF-like MARVEL transmembrane domain containing 4

Omim ID

[607887](#)

Gene Ontology

[Hyperlink](#)

Gene Summary

This gene belongs to the chemokine-like factor gene superfamily, a novel family that is similar to the chemokine and the transmembrane 4 superfamilies of signaling molecules. This gene is one of several chemokine-like factor genes located in a cluster on chromosome 16. Alternatively spliced transcript variants encoding different isoforms have been identified. [provided by RefSeq]

Other Designationschemokine-like factor super family 4|chemokine-like factor superfamily 4
