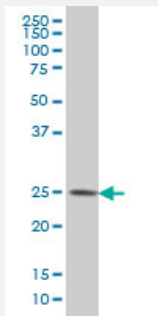


# CMTM4 monoclonal antibody (M01), clone 6G4

Catalog # H00146223-M01

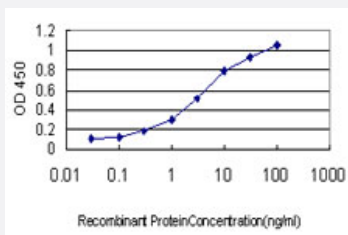
Size 100 ug

## Applications



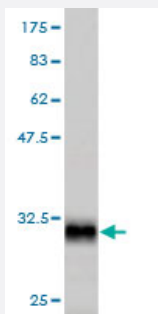
### Western Blot (Cell lysate)

CKLFSF4 monoclonal antibody (M01), clone 6G4 Western Blot analysis of CMTM4 expression in HeLa ( Cat # L013V1 ).



### Sandwich ELISA (Recombinant protein)

Detection limit for recombinant GST tagged CMTM4 is approximately 0.1ng/ml as a capture antibody.



Western Blot detection against Immunogen (32.56 KDa) .

## Specification

### Product Description

Mouse monoclonal antibody raised against a partial recombinant CMTM4.

Immunogen	CMTM4 (NP_848933, 173 a.a. ~ 234 a.a) partial recombinant protein with GST tag. MW of the GST tag alone is 26 KDa.
Sequence	QKWRVSVRQQSTNDYIRARTESRDVDSRPEIQRLDTFSYSTNVTVRKKSPTNLLSLNHWQLA
Host	Mouse
Reactivity	Human
Isotype	IgG1 Kappa
Quality Control Testing	Antibody Reactive Against Recombinant Protein. Western Blot detection against Immunogen (32.56 KDa) .
Storage Buffer	In 1x PBS, pH 7.4
Storage Instruction	Store at -20°C or lower. Aliquot to avoid repeated freezing and thawing.

## Applications

- Western Blot (Cell lysate)

CKLFSF4 monoclonal antibody (M01), clone 6G4 Western Blot analysis of CMTM4 expression in HeLa ( Cat # L013V1 ).

[Protocol Download](#)

- Western Blot (Recombinant protein)

[Protocol Download](#)

- Sandwich ELISA (Recombinant protein)

Detection limit for recombinant GST tagged CMTM4 is approximately 0.1ng/ml as a capture antibody.

[Protocol Download](#)

- ELISA

## Gene Info — CMTM4

Entrez GeneID	<a href="#">146223</a>
GeneBank Accession#	<a href="#">NM_178818</a>
Protein Accession#	<a href="#">NP_848933</a>

Gene Name	CMTM4
Gene Alias	CKLF4
Gene Description	CKLF-like MARVEL transmembrane domain containing 4
Omim ID	<a href="#">607887</a>
Gene Ontology	<a href="#">Hyperlink</a>
Gene Summary	This gene belongs to the chemokine-like factor gene superfamily, a novel family that is similar to the chemokine and the transmembrane 4 superfamilies of signaling molecules. This gene is one of several chemokine-like factor genes located in a cluster on chromosome 16. Alternatively spliced transcript variants encoding different isoforms have been identified. [provided by RefSeq]
Other Designations	chemokine-like factor super family 4 chemokine-like factor superfamily 4