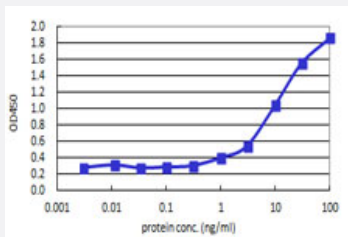


GSC (Human) Matched Antibody Pair

Catalog # H00145258-AP41 Size 1 Set

Applications



Sandwich ELISA detection sensitivity ranging from 0.3 ng/ml to 100 ng/ml.

Specification

Product Description	This antibody pair set comes with a matched antibody pair to detect and quantify the protein level of human GSC.
Reactivity	Human
Quality Control Testing	Standard curve using recombinant protein (H00145258-Q01) as an analyte. Sandwich ELISA detection sensitivity ranging from 0.3 ng/ml to 100 ng/ml.
Supplied Product	Antibody pair set content: 1. Capture antibody: mouse monoclonal anti-GSC, IgG2a Kappa (100 ug) 2. Detection antibody: biotinylated mouse monoclonal anti-GSC, IgG2a Kappa (50 ug) *Reagents are sufficient for at least 3-5 x 96 well plates using recommended protocols.
Storage Instruction	Store reagents of the antibody pair set at -20°C or lower. Please aliquot to avoid repeated freeze thaw cycle. Reagents should be returned to -20°C storage immediately after use.

Applications

- ELISA Pair (Recombinant protein)

[Protocol Download](#)

Gene Info — GSC

Entrez GeneID	145258
Gene Name	GSC
Gene Alias	-
Gene Description	goosecoid homeobox
Omim ID	138890
Gene Ontology	Hyperlink
Gene Summary	This gene encodes a member of the bicoid subfamily of the paired (PRD) homeobox family of proteins. The encoded protein acts as a transcription factor and may be autoregulatory. A similar protein in mice plays a role in craniofacial and rib cage development during embryogenesis. [provided by RefSeq]
Other Designations	goosecoid

Disease

- [Congenital Abnormalities](#)
- [Diabetes Complications](#)
- [Diabetes Mellitus](#)
- [Hyperglycemia](#)