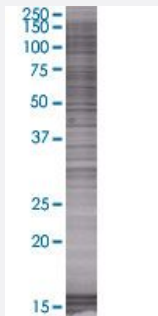


GLIPR1L2 293T Cell Transient Overexpression Lysate(Denatured)

Catalog # H00144321-T01

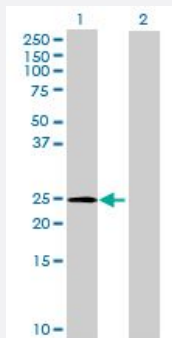
Size 100 uL

Applications



SDS-PAGE Gel

GLIPR1L2 transfected lysate.



Western Blot

Lane 1: GLIPR1L2 transfected lysate (27.94 KDa)

Lane 2: Non-transfected lysate.

Specification

Transfected Cell Line 293T

Plasmid pCMV-GLIPR1L2 full-length

Host Human

Theoretical MW (kDa) 27.94

Quality Control Testing Transient overexpression cell lysate was tested with Anti-GLIPR1L2 antibody ([H00144321-B01](#)) by Western Blots.
 SDS-PAGE Gel
 GLIPR1L2 transfected lysate.
 Western Blot
 Lane 1: GLIPR1L2 transfected lysate (27.94 KDa)
 Lane 2: Non-transfected lysate.

Storage Buffer

1X Sample Buffer (50 mM Tris-HCl, 2% SDS, 10% glycerol, 300 mM 2-mercaptoethanol, 0.01% Bromophenol blue)

Storage Instruction

Store at -80°C. Aliquot to avoid repeated freezing and thawing.

Applications

- Western Blot

Gene Info — GLIPR1L2

Entrez GeneID[144321](#)**GeneBank Accession#**[NM_152436](#)**Protein Accession#**[NP_689649](#)**Gene Name**

GLIPR1L2

Gene Alias

MGC39497

Gene Description

GLI pathogenesis-related 1 like 2

Omim ID[610394](#)**Gene Ontology**[Hyperlink](#)**Other Designations**

-