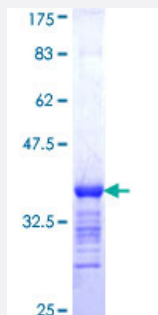


PRICKLE1 (Human) Recombinant Protein (Q01)

Catalog # H00144165-Q01

Size 25 ug, 10 ug

Applications



Specification

Product Description	Human PRICKLE1 partial ORF (NP_694571, 684 a.a. - 756 a.a.) recombinant protein with GST-tag at N-terminal.
Sequence	DNALNLVTERKYSPKDRRLRLYTPDNYEKF IQNKSAREIQAYIQNADLYGQYAHATPDYGLQNPGMN RFLGLYG
Host	Wheat Germ (in vitro)
Theoretical MW (kDa)	33.77
Preparation Method	in vitro wheat germ expression system
Purification	Glutathione Sepharose 4 Fast Flow
Quality Control Testing	12.5% SDS-PAGE Stained with Coomassie Blue.
Storage Buffer	50 mM Tris-HCl, 10 mM reduced Glutathione, pH=8.0 in the elution buffer.
Storage Instruction	Store at -80°C. Aliquot to avoid repeated freezing and thawing.
Note	Best use within three months from the date of receipt of this protein.

Applications

- Enzyme-linked Immunoabsorbent Assay
- Western Blot (Recombinant protein)
- Antibody Production
- Protein Array

Gene Info — PRICKLE1

Entrez GeneID	144165
GeneBank Accession#	NM_153026
Protein Accession#	NP_694571
Gene Name	PRICKLE1
Gene Alias	EPM1B, FLJ31627, FLJ31937, MGC138902, MGC138903, RILP
Gene Description	prickle homolog 1 (Drosophila)
Omim ID	608500
Gene Ontology	Hyperlink
Gene Summary	This gene encodes a nuclear receptor that may be a negative regulator of the Wnt/beta-catenin signaling pathway. The encoded protein localizes to the nuclear membrane and has been implicated in the nuclear trafficking of the transcription repressors REST/NRSF and REST4. Mutations in this gene have been linked to progressive myoclonus epilepsy. Alternate splicing results in multiple transcript variants. A pseudogene of this gene is found on chromosome 3. [provided by RefSeq]
Other Designations	REST (RE-1 silencing transcription factor)/NRSF (neuron-restrictive silencer factor)-interacting LIM domain protein REST/NRSF-interacting LIM domain protein prickle-like 1

Pathway

- [Wnt signaling pathway](#)

Disease

- [Diabetes Mellitus](#)