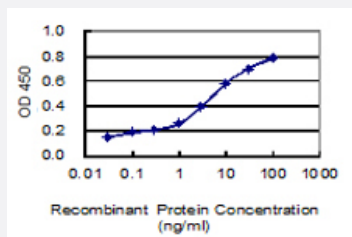


PRICKLE1 monoclonal antibody (M02), clone 8G5

Catalog # H00144165-M02

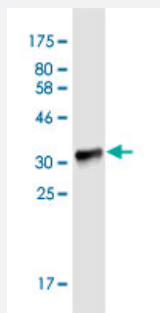
Size 100 ug

Applications



Sandwich ELISA (Recombinant protein)

Detection limit for recombinant GST tagged PRICKLE1 is 0.03 ng/ml as a capture antibody.



Western Blot detection against Immunogen (33.77 KDa) .

Specification

Product Description	Mouse monoclonal antibody raised against a partial recombinant PRICKLE1.
Immunogen	PRICKLE1 (NP_694571, 684 a.a. ~ 756 a.a) partial recombinant protein with GST tag. MW of the GST tag alone is 26 KDa.
Sequence	DNALNLVTERKYSPKDRRLRLYTPDNYEKFIQNKSAREIQAYIQNADLYGQYAHATPDYGLQNPGMN RFLGLYG
Host	Mouse
Reactivity	Human
Isotype	IgG2b Kappa

Quality Control Testing

Antibody Reactive Against Recombinant Protein.
Western Blot detection against Immunogen (33.77 KDa) .

Storage Buffer

In 1x PBS, pH 7.4

Storage Instruction

Store at -20°C or lower. Aliquot to avoid repeated freezing and thawing.

Applications

- Western Blot (Recombinant protein)

[Protocol Download](#)

- Sandwich ELISA (Recombinant protein)

Detection limit for recombinant GST tagged PRICKLE1 is 0.03 ng/ml as a capture antibody.

[Protocol Download](#)

- ELISA

Gene Info — PRICKLE1

Entrez GeneID

[144165](#)

GeneBank Accession#

[NM_153026](#)

Protein Accession#

[NP_694571](#)

Gene Name

PRICKLE1

Gene Alias

EPM1B, FLJ31627, FLJ31937, MGC138902, MGC138903, RILP

Gene Description

prickle homolog 1 (Drosophila)

Omim ID

[608500](#)

Gene Ontology

[Hyperlink](#)

Gene Summary

This gene encodes a nuclear receptor that may be a negative regulator of the Wnt/beta-catenin signaling pathway. The encoded protein localizes to the nuclear membrane and has been implicated in the nuclear trafficking of the transcription repressors REST/NRSF and REST4. Mutations in this gene have been linked to progressive myoclonus epilepsy. Alternate splicing results in multiple transcript variants. A pseudogene of this gene is found on chromosome 3. [provided by RefSeq]

Other Designations

REST (RE-1 silencing transcription factor)/NRSF (neuron-restrictive silencer factor)-interacting LIM domain protein|REST/NRSF-interacting LIM domain protein|prickle-like 1

Pathway

- [Wnt signaling pathway](#)

Disease

- [Diabetes Mellitus](#)