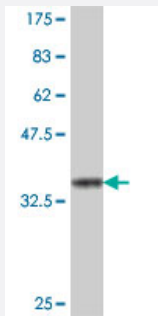


# PRICKLE1 polyclonal antibody (A01)

Catalog # H00144165-A01

Size 50 uL

## Applications



Western Blot detection against Immunogen (34.14 KDa) .

## Specification

<b>Product Description</b>	Mouse polyclonal antibody raised against a partial recombinant PRICKLE1.
<b>Immunogen</b>	PRICKLE1 (NP_694571, 684 a.a. ~ 756 a.a) partial recombinant protein with GST tag.
<b>Sequence</b>	DNALNLVTERKYSPKDLRLLYTPDNYEKFIQNKSAREIQAYIQNADLYGQYAHATPDYGLQNPGMN RFLGLYG
<b>Host</b>	Mouse
<b>Reactivity</b>	Human
<b>Quality Control Testing</b>	Antibody Reactive Against Recombinant Protein. Western Blot detection against Immunogen (34.14 KDa) .
<b>Storage Buffer</b>	50 % glycerol
<b>Storage Instruction</b>	Store at -20°C or lower. Aliquot to avoid repeated freezing and thawing.

## Applications

- Western Blot (Recombinant protein)

[Protocol Download](#)

- ELISA

## Gene Info — PRICKLE1

Entrez GeneID [144165](#)

GeneBank Accession# [NM\\_153026](#)

Protein Accession# [NP\\_694571](#)

Gene Name PRICKLE1

Gene Alias EPM1B, FLJ31627, FLJ31937, MGC138902, MGC138903, RILP

Gene Description prickles homolog 1 (Drosophila)

Omim ID [608500](#)

Gene Ontology [Hyperlink](#)

**Gene Summary** This gene encodes a nuclear receptor that may be a negative regulator of the Wnt/beta-catenin signaling pathway. The encoded protein localizes to the nuclear membrane and has been implicated in the nuclear trafficking of the transcription repressors REST/NRSF and REST4. Mutations in this gene have been linked to progressive myoclonus epilepsy. Alternate splicing results in multiple transcript variants. A pseudogene of this gene is found on chromosome 3. [provided by RefSeq]

**Other Designations** REST (RE-1 silencing transcription factor)/NRSF (neuron-restrictive silencer factor)-interacting LIM domain protein|REST/NRSF-interacting LIM domain protein|prickle-like 1

## Pathway

- [Wnt signaling pathway](#)

## Disease

- [Diabetes Mellitus](#)