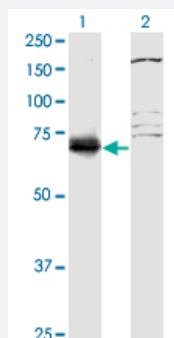


SFRS12 monoclonal antibody (M01), clone 1D11

Catalog # H00140890-M01

Size 100 ug

Applications

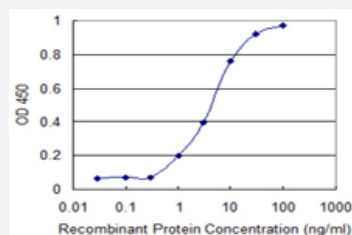


Western Blot (Transfected lysate)

Western Blot analysis of SFRS12 expression in transfected 293T cell line by SFRS12 monoclonal antibody (M01), clone 1D11.

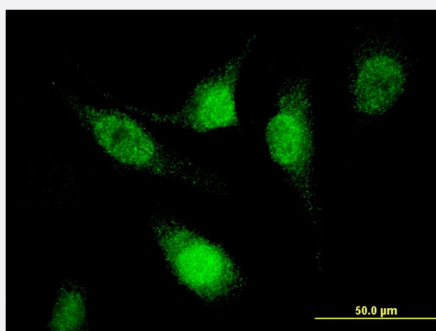
Lane 1: SFRS12 transfected lysate (Predicted MW: 59.4 KDa).

Lane 2: Non-transfected lysate.



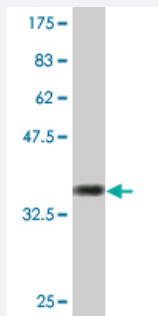
Sandwich ELISA (Recombinant protein)

Detection limit for recombinant GST tagged SFRS12 is 0.3 ng/ml as a capture antibody.



Immunofluorescence

Immunofluorescence of monoclonal antibody to SFRS12 on HeLa cell .
[antibody concentration 10 ug/ml]



Western Blot detection against Immunogen (33 KDa) .

Specification

Product Description	Mouse monoclonal antibody raised against a partial recombinant SFRS12.
Immunogen	SFRS12 (NP_631907, 443 a.a. ~ 508 a.a) partial recombinant protein with GST tag. MW of the GST tag alone is 26 KDa.
Sequence	NDRDGKEKLEKNSTSLKEKEHNKEPDSSVSKEVDDKDAPRTEENKIQHNGNCQLNEENLSTKTEAV
Host	Mouse
Reactivity	Human
Isotype	IgG2b Kappa
Quality Control Testing	Antibody Reactive Against Recombinant Protein. Western Blot detection against Immunogen (33 KDa) .
Storage Buffer	In 1x PBS, pH 7.4
Storage Instruction	Store at -20°C or lower. Aliquot to avoid repeated freezing and thawing.

Applications

- Western Blot (Transfected lysate)

Western Blot analysis of SFRS12 expression in transfected 293T cell line by SFRS12 monoclonal antibody (M01), clone 1D11.

Lane 1: SFRS12 transfected lysate (Predicted MW: 59.4 KDa).

Lane 2: Non-transfected lysate.

[Protocol Download](#)

- Western Blot (Recombinant protein)

[Protocol Download](#)

- Sandwich ELISA (Recombinant protein)

Detection limit for recombinant GST tagged SFRS12 is 0.3 ng/ml as a capture antibody.

[Protocol Download](#)

- ELISA

- Immunofluorescence

Immunofluorescence of monoclonal antibody to SFRS12 on HeLa cell . [antibody concentration 10 ug/ml]

Gene Info — SFRS12

Entrez GeneID [140890](#)

GeneBank Accession# [NM_139168](#)

Protein Accession# [NP_631907](#)

Gene Name SFRS12

Gene Alias DKFZp564B176, MGC133045, SRp508, SRp86

Gene Description splicing factor, arginine/serine-rich 12

Omim ID [609268](#)

Gene Ontology [Hyperlink](#)

Gene Summary SFRS12 belongs to the superfamily of serine/arginine-rich (SR) splicing factors. It modulates splice site selection by regulating the activities of other SR proteins (Barnard et al., 2002 [PubMed 11991645]).[supplied by OMIM]

Other Designations OTTHUMP00000123466|serine-arginine-rich splicing regulatory protein 508