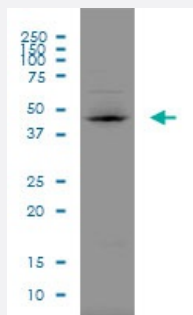


SIRPA monoclonal antibody (M10), clone 4C7

Catalog # H00140885-M10

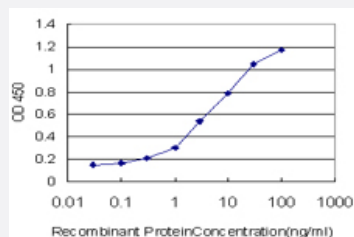
Size 100 ug

Applications



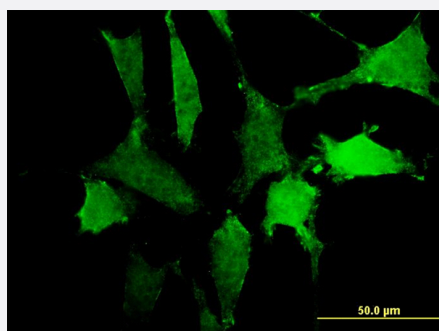
Western Blot (Cell lysate)

Western Blot analysis of SIRPA expression in HepG2 with SIRPA monoclonal antibody (M10), clone 4C7.



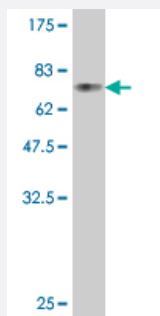
Sandwich ELISA (Recombinant protein)

Detection limit for recombinant GST tagged SIRPA is approximately 0.1ng/ml as a capture antibody.



Immunofluorescence

Immunofluorescence of monoclonal antibody to SIRPA on NIH/3T3 cell. [antibody concentration 10 ug/ml]



Western Blot detection against Immunogen (78.54 KDa) .

Specification

Product Description	Mouse monoclonal antibody raised against a full length recombinant SIRPA.
Immunogen	SIRPA (AAH26692, 28 a.a. ~ 507 a.a) full-length recombinant protein with GST tag. MW of the GST tag alone is 26 KDa.
Sequence	VAGEEELQVIQPDKSVSVAAGESAILHCTVTSLIPVGPIQWFRGAGPARELYNQKEGHFPRVTTV SESTKRENMDFSISINITPADAGTYCVKFRKGSPDTEFKSGAGTELSVRAKPSAPVVS GPAAR ATPQHTVSFTCESHGFSPRDLTKWFKNGNELSDFQTNVDPVGESVSYIHSTAKVVL TREDVHS QVICEVAHVTLQGDPLRG TANLSETIRVPPTLEV TQQPVRAENQVNVTCQVRKFYPQRLQLTWLE NGNVSR TETASTVTENKDGTYNWMSWLLVNVSAHRDDVKLT CQVEHDGQPAVSKSHDLKVS AH PKEQGSNTAAENTGSNERNIYVGVVCTLLVALLMAALYLVRIRQKKAQGSTSSTRLHEPEKNAR EITQVQSLDTNDITYADLNLPKGKKPAPQAAEPNNHTEYASIQTSPQPASEDTLTYADLDMVHLNR TPKQPAPKPEPSFSEYASVQVPRK
Host	Mouse
Reactivity	Human, Mouse
Isotype	IgG2a Kappa
Quality Control Testing	Antibody Reactive Against Recombinant Protein. Western Blot detection against Immunogen (78.54 KDa) .
Storage Buffer	In 1x PBS, pH 7.4
Storage Instruction	Store at -20°C or lower. Aliquot to avoid repeated freezing and thawing.

Applications

- Western Blot (Cell lysate)

Western Blot analysis of SIRPA expression in HepG2 with SIRPA monoclonal antibody (M10), clone 4C7.

[Protocol Download](#)

- Western Blot (Recombinant protein)

[Protocol Download](#)

- Sandwich ELISA (Recombinant protein)

Detection limit for recombinant GST tagged SIRPA is approximately 0.1ng/ml as a capture antibody.

[Protocol Download](#)

- ELISA

- Immunofluorescence

Immunofluorescence of monoclonal antibody to SIRPA on NIH/3T3 cell. [antibody concentration 10 ug/ml]

Gene Info — SIRPA

Entrez GeneID [140885](#)

GeneBank Accession# [BC026692](#)

Protein Accession# [AAH26692](#)

Gene Name SIRPA

Gene Alias BIT, CD172A, MFR, MYD-1, P84, PTPNS1, SHPS-1, SHPS1, SIRP, SIRP-ALPHA-1, SIRPalpha, SIRPalpha2

Gene Description signal-regulatory protein alpha

Omim ID [602461](#)

Gene Ontology [Hyperlink](#)

Gene Summary

The protein encoded by this gene is a member of the signal-regulatory-protein (SIRP) family, and also belongs to the immunoglobulin superfamily. SIRP family members are receptor-type transmembrane glycoproteins known to be involved in the negative regulation of receptor tyrosine kinase-coupled signaling processes. This protein can be phosphorylated by tyrosine kinases. The phospho-tyrosine residues of this PTP have been shown to recruit SH2 domain containing tyrosine phosphatases (PTP), and serve as substrates of PTPs. This protein was found to participate in signal transduction mediated by various growth factor receptors. CD47 has been demonstrated to be a ligand for this receptor protein. This gene and its product share very high similarity with several other members of the SIRP family. These related genes are located in close proximity to each other on chromosome 20p13. Multiple alternatively spliced transcript variants have been determined for this gene. [provided by RefSeq]

Other Designations

OTTHUMP00000030001|SHP substrate-1|brain-immunoglobulin-like molecule with tyrosine-based activation motifs|macrophage fusion receptor|myd-1 antigen|protein tyrosine phosphatase, non-receptor type substrate 1|signal regulatory protein, alpha type 1|signal
