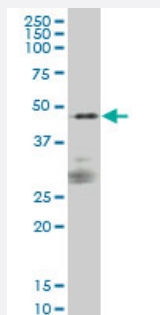


SIRPA monoclonal antibody (M01), clone 1D10

Catalog # H00140885-M01

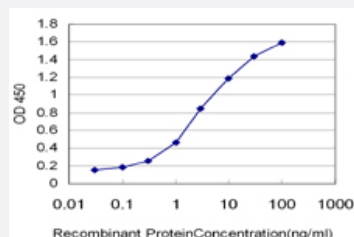
Size 50 ug

Applications



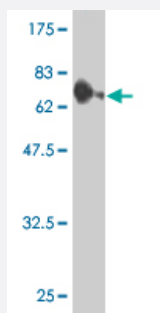
Western Blot (Cell lysate)

SIRPA monoclonal antibody (M01), clone 1D10 Western Blot analysis of SIRPA expression in IMR-32 (Cat # L008V1).



Sandwich ELISA (Recombinant protein)

Detection limit for recombinant GST tagged SIRPA is approximately 0.03ng/ml as a capture antibody.



Western Blot detection against Immunogen (78.54 KDa) .

Specification

Product Description

Mouse monoclonal antibody raised against a full length recombinant SIRPA.

Immunogen	SIRPA (AAH26692, 28 a.a. ~ 507 a.a) full-length recombinant protein with GST tag. MW of the GST tag alone is 26 KDa.
Sequence	VAGEEELQVIQPDKSVSVAAGESAILHCTVTSLIPVGPIQWFRGAGPARELYNQKEGHFPRVTTV SESTKRENMDFSISISNITPADAGTYCVKFRKGSPTDFKSGAGTELSVRAKPSAPVVSGPAAR ATPQHTVSFTCESHGFSPRDITLKWFKNGNELSDFQTNVDPVGESVSYIHSTAKVVLTRDVDHS QVICEVAHVTLQGDPLRGANLSETIRVPPTLEVTTQQPVRAENQVNVTCQVRKFYPQRLQLTWLE NGNVSRTETASTVTENKDGTYNWMSWLLVNVSAHRDDVKLTQVEHDGQPAVSKSHDLKVSAN PKEQGSNTAAENTGSNERNYVGVVCTLLVALLMAALYLVRIRQKKAQGSTSSTRLHEPEKNAR EITQVQSLDTNDITYADLNLPKGKKPAPQAAEPNNHTEYASIQTSPQPASEDTLTYADLDMVHLNR TPKQPAPKPEPSFSEYASVQVPRK
Host	Mouse
Reactivity	Human
Isotype	IgG2a Kappa
Quality Control Testing	Antibody Reactive Against Recombinant Protein. Western Blot detection against Immunogen (78.54 KDa) .
Storage Buffer	In 1x PBS, pH 7.4
Storage Instruction	Store at -20°C or lower. Aliquot to avoid repeated freezing and thawing.

Applications

- Western Blot (Cell lysate)

SIRPA monoclonal antibody (M01), clone 1D10 Western Blot analysis of SIRPA expression in IMR-32 (Cat # L008V1).

[Protocol Download](#)

- Western Blot (Recombinant protein)

[Protocol Download](#)

- Sandwich ELISA (Recombinant protein)

Detection limit for recombinant GST tagged SIRPA is approximately 0.03ng/ml as a capture antibody.

[Protocol Download](#)

- ELISA

Gene Info — SIRPA

Entrez GeneID	140885
GeneBank Accession#	BC026692
Protein Accession#	AAH26692
Gene Name	SIRPA
Gene Alias	BIT, CD172A, MFR, MYD-1, P84, PTPNS1, SHPS-1, SHPS1, SIRP, SIRP-ALPHA-1, SIRPalpha, SIRPalpha2
Gene Description	signal-regulatory protein alpha
Omim ID	602461
Gene Ontology	Hyperlink
Gene Summary	<p>The protein encoded by this gene is a member of the signal-regulatory-protein (SIRP) family, and also belongs to the immunoglobulin superfamily. SIRP family members are receptor-type transmembrane glycoproteins known to be involved in the negative regulation of receptor tyrosine kinase-coupled signaling processes. This protein can be phosphorylated by tyrosine kinases. The phospho-tyrosine residues of this PTP have been shown to recruit SH2 domain containing tyrosine phosphatases (PTP), and serve as substrates of PTPs. This protein was found to participate in signal transduction mediated by various growth factor receptors. CD47 has been demonstrated to be a ligand for this receptor protein. This gene and its product share very high similarity with several other members of the SIRP family. These related genes are located in close proximity to each other on chromosome 20p13. Multiple alternatively spliced transcript variants have been determined for this gene. [provided by RefSeq]</p>
Other Designations	OTTHUMP00000030001 SHP substrate-1 brain-immunoglobulin-like molecule with tyrosine-based activation motifs macrophage fusion receptor myd-1 antigen protein tyrosine phosphatase, non-receptor type substrate 1 signal regulatory protein, alpha type 1 signal