

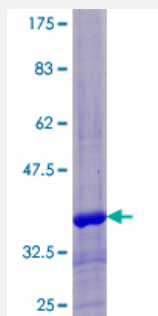
Full-Length

WFDC6 (Human) Recombinant Protein (P01)

Catalog # H00140870-P01

Size 25 ug, 10 ug

Applications



Specification

Product Description	Human WFDC6 full-length ORF (NP_543017.1, 1 a.a. - 86 a.a.) recombinant protein with GST-tag at N-terminal.
Sequence	MGLSGLLPILVPFILLGDIQEPGHAEGILGKPCPKIKVECEVEEIDQCTKPRDCPENMKCCPFSRG KKCLDFRKVSLTYHKEELE
Host	Wheat Germ (in vitro)
Theoretical MW (kDa)	36.1
Preparation Method	in vitro wheat germ expression system
Purification	Glutathione Sepharose 4 Fast Flow
Quality Control Testing	12.5% SDS-PAGE Stained with Coomassie Blue.
Storage Buffer	50 mM Tris-HCl, 10 mM reduced Glutathione, pH=8.0 in the elution buffer.
Storage Instruction	Store at -80°C. Aliquot to avoid repeated freezing and thawing.
Note	Best use within three months from the date of receipt of this protein.

Applications

- Enzyme-linked Immunoabsorbent Assay
- Western Blot (Recombinant protein)
- Antibody Production
- Protein Array

Gene Info — WFDC6

Entrez GeneID [140870](#)

GeneBank Accession# [NM_080827.1](#)

Protein Accession# [NP_543017.1](#)

Gene Name WFDC6

Gene Alias C20orf171, MGC126649, MGC126653, WAP6, dJ461P17.11

Gene Description WAP four-disulfide core domain 6

Gene Ontology [Hyperlink](#)

Gene Summary This gene encodes a member of the WAP-type four-disulfide core (WFDC) domain family. The WFDC domain, or WAP signature motif, contains eight cysteines forming four disulfide bonds at the core of the protein, and functions as a protease inhibitor. Most WFDC gene members are localized to chromosome 20q12-q13 in two clusters: centromeric and telomeric. This gene belongs to the telomeric cluster. [provided by RefSeq]

Other Designations OTTHUMP00000043709|protease inhibitor WAP6