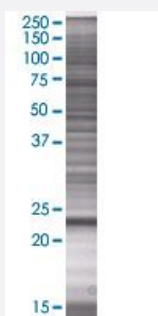


RPL10L 293T Cell Transient Overexpression Lysate(Denatured)

Catalog # H00140801-T01

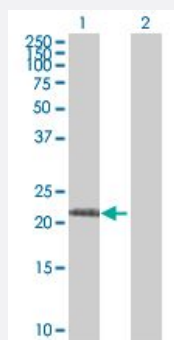
Size 100 uL

Applications



SDS-PAGE Gel

RPL10L transfected lysate.



Western Blot

Lane 1: RPL10L transfected lysate (23.65 KDa)

Lane 2: Non-transfected lysate.

Specification

Transfected Cell Line 293T

Plasmid pCMV-RPL10L full-length

Host Human

Theoretical MW (kDa) 23.65

Quality Control Testing Transient overexpression cell lysate was tested with Anti-RPL10L antibody ([H00140801-B01](#)) by Western Blots.
SDS-PAGE Gel
RPL10L transfected lysate.
Western Blot
Lane 1: RPL10L transfected lysate (23.65 KDa)
Lane 2: Non-transfected lysate.

Storage Buffer

1X Sample Buffer (50 mM Tris-HCl, 2% SDS, 10% glycerol, 300 mM 2-mercaptoethanol, 0.01% Bromophenol blue)

Storage Instruction

Store at -80°C. Aliquot to avoid repeated freezing and thawing.

Applications

- Western Blot

Gene Info — RPL10L

Entrez GeneID

[140801](#)

GeneBank Accession#

[NM_080746.2](#)

Protein Accession#

[NP_542784.1](#)

Gene Name

RPL10L

Gene Alias

FLJ27353

Gene Description

ribosomal protein L10-like

Gene Ontology

[Hyperlink](#)

Gene Summary

This gene encodes a protein sharing sequence similarity with ribosomal protein L10. It is not currently known whether the encoded protein is a functional ribosomal protein or whether it has evolved a function that is independent of the ribosome. This gene is intronless. [provided by RefSeq]

Other Designations

ribosomal protein L10-like protein

Pathway

- [Ribosome](#)