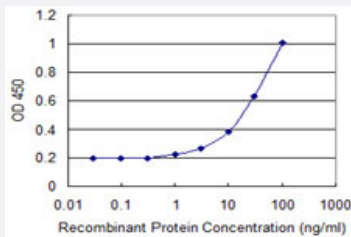


# RPL10L monoclonal antibody (M01), clone 1E9

Catalog # H00140801-M01

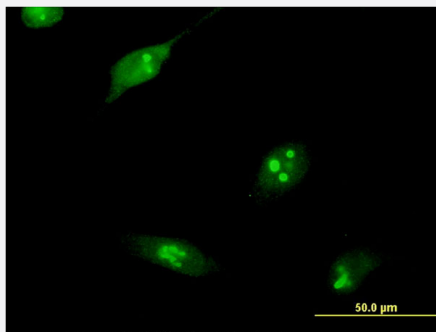
Size 100 ug

## Applications



### Sandwich ELISA (Recombinant protein)

Detection limit for recombinant GST tagged RPL10L is 0.3 ng/ml as a capture antibody.



### Immunofluorescence

Immunofluorescence of monoclonal antibody to RPL10L on HeLa cell .  
[antibody concentration 10 ug/ml]

## Specification

Product Description	Mouse monoclonal antibody raised against a partial recombinant RPL10L.
Immunogen	RPL10L (NP_542784.1, 115 a.a. ~ 214 a.a) partial recombinant protein with GST tag. MW of the GST tag alone is 26 KDa.
Sequence	MRGAFGKPQGTVARVHIGQVIMSIRTKLQNEEHVIEALRRAKFKFPGRQKIHISKKWGFTKFNADF EDMVAKKCLIPDGCCKVYVPSHGPLDKWRVLHS
Host	Mouse
Reactivity	Human
Isotype	IgG1 Kappa

Quality Control Testing	Antibody Reactive Against Recombinant Protein.
Storage Buffer	In 1x PBS, pH 7.4
Storage Instruction	Store at -20°C or lower. Aliquot to avoid repeated freezing and thawing.

## Applications

- Sandwich ELISA (Recombinant protein)

Detection limit for recombinant GST tagged RPL10L is 0.3 ng/ml as a capture antibody.

[Protocol Download](#)

- ELISA

- Immunofluorescence

Immunofluorescence of monoclonal antibody to RPL10L on HeLa cell . [antibody concentration 10 ug/ml]

## Gene Info — RPL10L

Entrez GeneID	<a href="#">140801</a>
GeneBank Accession#	<a href="#">NM_080746</a>
Protein Accession#	<a href="#">NP_542784.1</a>
Gene Name	RPL10L
Gene Alias	FLJ27353
Gene Description	ribosomal protein L10-like
Gene Ontology	<a href="#">Hyperlink</a>
Gene Summary	This gene encodes a protein sharing sequence similarity with ribosomal protein L10. It is not currently known whether the encoded protein is a functional ribosomal protein or whether it has evolved a function that is independent of the ribosome. This gene is intronless. [provided by RefSeq]
Other Designations	ribosomal protein L10-like protein

## Pathway

- [Ribosome](#)