

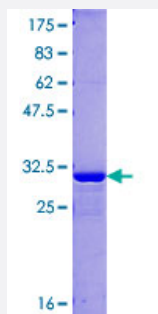
Full-Length

WFDC3 (Human) Recombinant Protein (P01)

Catalog # H00140686-P01

Size 25 ug, 10 ug

Applications



Specification

Product Description	Human WFDC3 full-length ORF (AAH26014.2, 1 a.a. - 48 a.a.) recombinant protein with GST-tag at N-terminal.
Sequence	MDENCQAGEKCCKSGCGRFCVPPVLPPKLTMNPNWTVRSDSELEIPVP
Host	Wheat Germ (in vitro)
Theoretical MW (kDa)	31.7
Preparation Method	in vitro wheat germ expression system
Purification	Glutathione Sepharose 4 Fast Flow
Quality Control Testing	12.5% SDS-PAGE Stained with Coomassie Blue.
Storage Buffer	50 mM Tris-HCl, 10 mM reduced Glutathione, pH=8.0 in the elution buffer.
Storage Instruction	Store at -80°C. Aliquot to avoid repeated freezing and thawing.
Note	Best use within three months from the date of receipt of this protein.

Applications

- Enzyme-linked Immunoabsorbent Assay
- Western Blot (Recombinant protein)
- Antibody Production
- Protein Array

Gene Info — WFDC3

Entrez GeneID [140686](#)

GeneBank Accession# [BC026014.1](#)

Protein Accession# [AAH26014.2](#)

Gene Name WFDC3

Gene Alias WAP14, dJ447F3.3

Gene Description WAP four-disulfide core domain 3

Gene Ontology [Hyperlink](#)

Gene Summary This gene encodes a member of the WAP-type four-disulfide core (WFDC) domain family. The WFDC domain, or WAP signature motif, contains eight cysteines forming four disulfide bonds at the core of the protein, and functions as a protease inhibitor. The encoded protein contains four WFDC domains. Most WFDC genes are localized to chromosome 20q12-q13 in two clusters: centromeric and telomeric. This gene belongs to the telomeric cluster. Alternatively spliced transcript variants have been observed but their full-length nature has not been determined. [provided by RefSeq]

Other Designations OTTHUMP00000196627|protease inhibitor WAP14|whey acidic protein 14