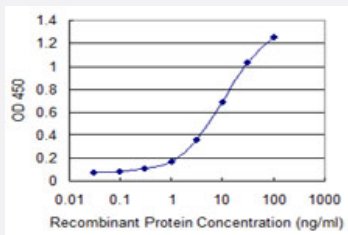


# WFDC3 monoclonal antibody (M03), clone 5C12

Catalog # H00140686-M03

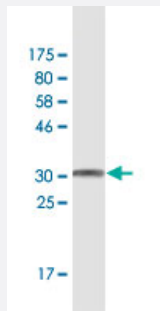
Size 100 ug

## Applications



### Sandwich ELISA (Recombinant protein)

Detection limit for recombinant GST tagged WFDC3 is 0.1 ng/ml as a capture antibody.



Western Blot detection against Immunogen (31.7 KDa) .

## Specification

Product Description	Mouse monoclonal antibody raised against a full-length recombinant WFDC3.
Immunogen	WFDC3 (AAH26014.2, 1 a.a. ~ 48 a.a) full-length recombinant protein with GST tag. MW of the GST tag alone is 26 KDa.
Sequence	MDENCQAGEKCCKSGCGRFCVPPVLPPKLTMPNWTVRSDSELEIPVP
Host	Mouse
Reactivity	Human
Isotype	IgG1 Kappa

**Quality Control Testing**

Antibody Reactive Against Recombinant Protein.  
Western Blot detection against Immunogen (31.7 KDa) .

**Storage Buffer**

In 1x PBS, pH 7.4

**Storage Instruction**

Store at -20°C or lower. Aliquot to avoid repeated freezing and thawing.

## Applications

- Western Blot (Recombinant protein)

[Protocol Download](#)

- Sandwich ELISA (Recombinant protein)

Detection limit for recombinant GST tagged WFDC3 is 0.1 ng/ml as a capture antibody.

[Protocol Download](#)

- ELISA

## Gene Info — WFDC3

**Entrez GeneID**

[140686](#)

**GeneBank Accession#**

[BC026014.1](#)

**Protein Accession#**

[AAH26014.2](#)

**Gene Name**

WFDC3

**Gene Alias**

WAP14, dJ447F3.3

**Gene Description**

WAP four-disulfide core domain 3

**Gene Ontology**

[Hyperlink](#)

**Gene Summary**

This gene encodes a member of the WAP-type four-disulfide core (WFDC) domain family. The WFDC domain, or WAP signature motif, contains eight cysteines forming four disulfide bonds at the core of the protein, and functions as a protease inhibitor. The encoded protein contains four WFDC domains. Most WFDC genes are localized to chromosome 20q12-q13 in two clusters: centromeric and telomeric. This gene belongs to the telomeric cluster. Alternatively spliced transcript variants have been observed but their full-length nature has not been determined. [provided by RefSeq]

**Other Designations**

OTTHUMP00000196627|protease inhibitor WAP14|whey acidic protein 14