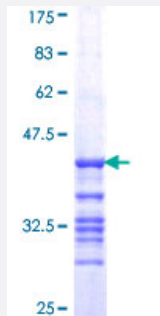


ARPM2 (Human) Recombinant Protein (Q01)

Catalog # H00140625-Q01

Size 25 ug, 10 ug

Applications



Specification

Product Description	Human ARPM2 partial ORF (NP_536356, 209 a.a. - 299 a.a.) recombinant protein with GST-tag at N-terminal.
Sequence	DKGLVDDIKKKLCYVALEPEKELSRPPEEVLREYKLPDGNISLGDPLHQAPEALFVPQQLGSQSP GLSNMVSSSITKCDTDIQKILFGEI
Host	Wheat Germ (in vitro)
Theoretical MW (kDa)	35.75
Preparation Method	in vitro wheat germ expression system
Purification	Glutathione Sepharose 4 Fast Flow
Quality Control Testing	12.5% SDS-PAGE Stained with Coomassie Blue.
Storage Buffer	50 mM Tris-HCl, 10 mM reduced Glutathione, pH=8.0 in the elution buffer.
Storage Instruction	Store at -80°C. Aliquot to avoid repeated freezing and thawing.
Note	Best use within three months from the date of receipt of this protein.

Applications

- Enzyme-linked Immunoabsorbent Assay
- Western Blot (Recombinant protein)
- Antibody Production
- Protein Array

Gene Info — ACTRT2

Entrez GeneID [140625](#)

GeneBank Accession# [NM_080431](#)

Protein Accession# [NP_536356](#)

Gene Name ACTRT2

Gene Alias ARPM2, ARPT2, Arp-T2, FLJ25424, HARPM2

Gene Description actin-related protein T2

Omim ID [608535](#)

Gene Ontology [Hyperlink](#)

Gene Summary The protein encoded by this intronless gene belongs to the actin family. Studies have shown that this protein may be involved in cytoskeletal organization similar to other cytoplasmic actin-related protein (ARP) subfamily members. Antibody raised against the human protein has been used to detect the protein by immunoblotting and immunofluorescence microscopy, demonstrating its specific synthesis in the testis, late in spermatid differentiation, and its localization in the calyx. [provided by RefSeq]

Other Designations OTTHUMP00000000569|actin-related protein M2|actin-related protein hArpM2