

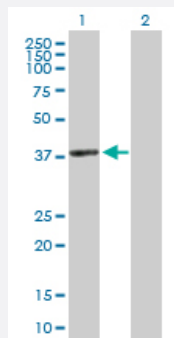
MaxPab®

# ACTRT2 purified MaxPab rabbit polyclonal antibody (D01P)

Catalog # H00140625-D01P

Size 100 ug

## Applications



### Western Blot (Transfected lysate)

Western Blot analysis of ACTRT2 expression in transfected 293T cell line ([H00140625-T02](#)) by ACTRT2 MaxPab polyclonal antibody.

Lane 1: ACTRT2 transfected lysate(41.70 KDa).

Lane 2: Non-transfected lysate.

## Specification

Product Description	Rabbit polyclonal antibody raised against a full-length human ACTRT2 protein.
Immunogen	ACTRT2 (NP_536356.3, 1 a.a. ~ 377 a.a) full-length human protein.
Sequence	MFNPHALDSPAVIFDNGSGFCKAGLSGEFGPRHVMSSIVGHLKFQAPSAEANQKKYFVGEEALY KQEALQLHSPFERGLITGWDDVERLWKHLFEWELGVKPSDQPLLATEPSLNPRENREKMAEVM FENFGVPAFYLSQAVLALYASACVTGLVVDSGDAVTCTVPIFEGYSLPHAVTKLHVAGRDITELL MQLLLASGHTFPCQLDKGLVDDIKKKLCYVALEPEKELSRPPEEVLREYKLPDGNISLGDPLHQA PEALFVPQQQLGSQSPGLSNMVSSSITKCDTDIQKILFGEIVLSGGTTLFHGLDDRLLKELEQLASKD TPIKITAPPDRWFSTWIGASMTSLSSFQMWVTAADFKEFGTSVVQRRCF
Host	Rabbit
Reactivity	Human
Quality Control Testing	Antibody reactive against mammalian transfected lysate.
Storage Buffer	In 1x PBS, pH 7.4
Storage Instruction	Store at -20°C or lower. Aliquot to avoid repeated freezing and thawing.

## Applications

- Western Blot (Transfected lysate)

Western Blot analysis of ACTRT2 expression in transfected 293T cell line ([H00140625-T02](#)) by ACTRT2 MaxPab polyclonal antibody.

Lane 1: ACTRT2 transfected lysate(41.70 KDa).

Lane 2: Non-transfected lysate.

[Protocol Download](#)

## Gene Info — ACTRT2

Entrez GeneID [140625](#)

GeneBank Accession# [NM\\_080431.4](#)

Protein Accession# [NP\\_536356.3](#)

Gene Name ACTRT2

Gene Alias ARPM2, ARPT2, Arp-T2, FLJ25424, HARPM2

Gene Description actin-related protein T2

Omim ID [608535](#)

Gene Ontology [Hyperlink](#)

**Gene Summary** The protein encoded by this intronless gene belongs to the actin family. Studies have shown that this protein may be involved in cytoskeletal organization similar to other cytoplasmic actin-related protein (ARP) subfamily members. Antibody raised against the human protein has been used to detect the protein by immunoblotting and immunofluorescence microscopy, demonstrating its specific synthesis in the testis, late in spermatid differentiation, and its localization in the calyx. [provided by RefSeq]

**Other Designations** OTTHUMP00000000569|actin-related protein M2|actin-related protein hArpM2