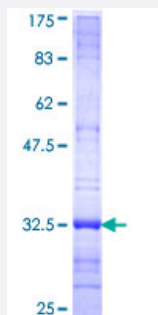


CHODL (Human) Recombinant Protein (Q01)

Catalog # H00140578-Q01

Size 25 ug, 10 ug

Applications



Specification

Product Description	Human CHODL partial ORF (NP_079220, 23 a.a. - 94 a.a.) recombinant protein with GST-tag at N-terminal.
Sequence	RVVSGQKVCFAFDKHPCKMAYFHELSSRVSFQEARLACESEGGVLLSLENEAEQKLIESMLQN LTKPGTGI
Host	Wheat Germ (in vitro)
Theoretical MW (kDa)	33.66
Preparation Method	in vitro wheat germ expression system
Purification	Glutathione Sepharose 4 Fast Flow
Quality Control Testing	12.5% SDS-PAGE Stained with Coomassie Blue.
Storage Buffer	50 mM Tris-HCl, 10 mM reduced Glutathione, pH=8.0 in the elution buffer.
Storage Instruction	Store at -80°C. Aliquot to avoid repeated freezing and thawing.
Note	Best use within three months from the date of receipt of this protein.

Applications

- Enzyme-linked Immunoabsorbent Assay
- Western Blot (Recombinant protein)
- Antibody Production
- Protein Array

Gene Info — CHODL

Entrez GeneID [140578](#)

GeneBank Accession# [NM_024944](#)

Protein Accession# [NP_079220](#)

Gene Name CHODL

Gene Alias C21orf68, FLJ12627, MT75, PRED12

Gene Description chondrolectin

Omim ID [607247](#)

Gene Ontology [Hyperlink](#)

Gene Summary This gene encodes a type I membrane protein with a carbohydrate recognition domain characteristic of C-type lectins in its extracellular portion. In other proteins, this domain is involved in endocytosis of glycoproteins and exogenous sugar-bearing pathogens. This protein localizes predominantly to the perinuclear region. [provided by RefSeq]

Other Designations transmembrane protein MT75