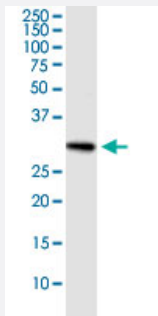


RNF32 (Human) IP-WB Antibody Pair

Catalog # H00140545-PW3

Size 1 Set

Applications



Immunoprecipitation of RNF32 transfected lysate using rabbit purified polyclonal anti-RNF32 and Protein A Magnetic Bead ([U0007](#)), and immunoblotted with mouse purified polyclonal anti-RNF32.

Specification

Product Description	This IP-WB antibody pair set comes with one antibody for immunoprecipitation and another to detect the precipitated protein in western blot.
Reactivity	Human
Quality Control Testing	Immunoprecipitation-Western Blot (IP-WB) Immunoprecipitation of RNF32 transfected lysate using rabbit purified polyclonal anti-RNF32 and Protein A Magnetic Bead (U0007), and immunoblotted with mouse purified polyclonal anti-RNF32.
Supplied Product	Antibody pair set content: 1. Antibody pair for IP: rabbit purified polyclonal anti-RNF32 (300 ug) 2. Antibody pair for WB: mouse purified polyclonal anti-RNF32 (50 ug)
Storage Instruction	Store reagents of the antibody pair set at -20°C or lower. Please aliquot to avoid repeated freeze thaw cycle. Reagents should be returned to -20°C storage immediately after use.

Applications

- Immunoprecipitation-Western Blot

[Protocol Download](#)

Gene Info — RNF32

Entrez GeneID	140545
Gene Name	RNF32
Gene Alias	FKSG33, HSD15
Gene Description	ring finger protein 32
Omim ID	610241
Gene Ontology	Hyperlink
Gene Summary	<p>The protein encoded by this gene contains two RING ring finger motifs. RING finger motifs are present in a variety of functionally distinct proteins and are known to be involved in protein-DNA or protein-protein interactions. This gene was found to be expressed during spermatogenesis, most likely in spermatocytes and/or in spermatids. Several alternatively spliced transcript variants exist, but their full length natures are not clear. [provided by RefSeq]</p>
Other Designations	-