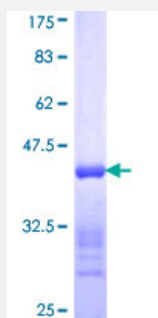


MLC1SA (Human) Recombinant Protein (Q01)

Catalog # H00140465-Q01

Size 25 ug, 10 ug

Applications



Specification

Product Description	Human MLC1SA partial ORF (NP_002466, 109 a.a. - 208 a.a.) recombinant protein with GST-tag at N-terminal.
Sequence	LGNPKSDELKSRRVDFETFLPMLQAVAKNRGQGTYEDYLEGFRVFDKEGNGKVMGAELRHVLTTLGEKMTEEEVETVLAGHEDSNGCINYEAFLEKHLISV
Host	Wheat Germ (in vitro)
Theoretical MW (kDa)	36.74
Preparation Method	in vitro wheat germ expression system
Purification	Glutathione Sepharose 4 Fast Flow
Quality Control Testing	12.5% SDS-PAGE Stained with Coomassie Blue.
Storage Buffer	50 mM Tris-HCl, 10 mM reduced Glutathione, pH=8.0 in the elution buffer.
Storage Instruction	Store at -80°C. Aliquot to avoid repeated freezing and thawing.
Note	Best use within three months from the date of receipt of this protein.

Applications

- Enzyme-linked Immunoabsorbent Assay
- Western Blot (Recombinant protein)
- Antibody Production
- Protein Array

Gene Info — MYL6B

Entrez GeneID [140465](#)

GeneBank Accession# [NM_002475](#)

Protein Accession# [NP_002466](#)

Gene Name MYL6B

Gene Alias MLC1SA

Gene Description myosin, light chain 6B, alkali, smooth muscle and non-muscle

Omim ID [609930](#)

Gene Ontology [Hyperlink](#)

Gene Summary Myosin is a hexameric ATPase cellular motor protein. It is composed of two heavy chains, two nonphosphorylatable alkali light chains, and two phosphorylatable regulatory light chains. This gene encodes a myosin alkali light chain expressed in both slow-twitch skeletal muscle and in nonmuscle tissue. [provided by RefSeq]

Other Designations myosin alkali light chain 1 slow alpha|myosin light chain 1 slow alpha|myosin light chain 1, slow-twitch muscle A isoform|myosin, light polypeptide 6B, alkali, smooth muscle and non-muscle|smooth muscle and non-muscle myosin alkali light chain 6B