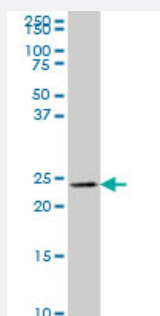


# MLC1SA monoclonal antibody (M01), clone 4G11

Catalog # H00140465-M01

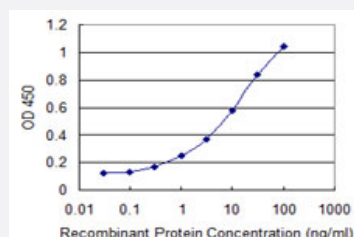
Size 100 ug

## Applications



### Western Blot (Cell lysate)

MLC1SA monoclonal antibody (M01), clone 4G11 Western Blot analysis of MLC1SA expression in K-562 ( Cat # L009V1 ).



### Sandwich ELISA (Recombinant protein)

Detection limit for recombinant GST tagged MYL6B is 0.1 ng/ml as a capture antibody.



Western Blot detection against Immunogen (36.74 KDa) .

## Specification

### Product Description

Mouse monoclonal antibody raised against a partial recombinant MLC1SA.

Immunogen	MLC1SA (NP_002466, 109 a.a. ~ 208 a.a) partial recombinant protein with GST tag. MW of the GST tag alone is 26 KDa.
Sequence	LGNPKSDELKSRRVDFETFLPMLQAVAKNRGQGTYEDYLEGFRVFDKEGNGKVMGAELRHVLTTLGEKMTEEEVETVLAGHEDSNGCINYEAFLEKHLISV
Host	Mouse
Reactivity	Human
Isotype	IgG2b Kappa
Quality Control Testing	Antibody Reactive Against Recombinant Protein. Western Blot detection against Immunogen (36.74 KDa) .
Storage Buffer	In 1x PBS, pH 7.4
Storage Instruction	Store at -20°C or lower. Aliquot to avoid repeated freezing and thawing.

## Applications

- Western Blot (Cell lysate)

MLC1SA monoclonal antibody (M01), clone 4G11 Western Blot analysis of MLC1SA expression in K-562 ( Cat # L009V1 ).

[Protocol Download](#)

- Western Blot (Recombinant protein)

[Protocol Download](#)

- Sandwich ELISA (Recombinant protein)

Detection limit for recombinant GST tagged MYL6B is 0.1 ng/ml as a capture antibody.

[Protocol Download](#)

- ELISA

## Gene Info — MYL6B

Entrez GeneID	<a href="#">140465</a>
GeneBank Accession#	<a href="#">NM_002475</a>
Protein Accession#	<a href="#">NP_002466</a>

Gene Name	MYL6B
Gene Alias	MLC1SA
Gene Description	myosin, light chain 6B, alkali, smooth muscle and non-muscle
Omim ID	<a href="#">609930</a>
Gene Ontology	<a href="#">Hyperlink</a>
Gene Summary	Myosin is a hexameric ATPase cellular motor protein. It is composed of two heavy chains, two nonphosphorylatable alkali light chains, and two phosphorylatable regulatory light chains. This gene encodes a myosin alkali light chain expressed in both slow-twitch skeletal muscle and in nonmuscle tissue. [provided by RefSeq]
Other Designations	myosin alkali light chain 1 slow alpha myosin light chain 1 slow alpha myosin light chain 1, slow-twitch muscle A isoform myosin, light polypeptide 6B, alkali, smooth muscle and non-muscle smooth muscle and non-muscle myosin alkali light chain 6B