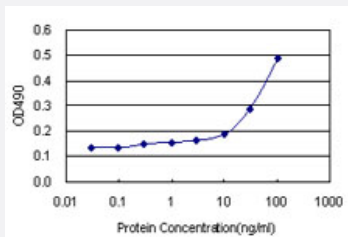


## MYL6B (Human) Matched Antibody Pair

Catalog # H00140465-AP22

Size 1 Set

### Applications



Sandwich ELISA detection sensitivity ranging from 10 ng/ml to 100 ng/ml.

### Specification

<b>Product Description</b>	This antibody pair set comes with a matched antibody pair to detect and quantify the protein level of human MYL6B.
<b>Reactivity</b>	Human
<b>Quality Control Testing</b>	Standard curve using recombinant protein ( H00140465-P01 ) as an analyte. Sandwich ELISA detection sensitivity ranging from 10 ng/ml to 100 ng/ml.
<b>Supplied Product</b>	Antibody pair set content: 1. Capture antibody: rabbit MaxPab® affinity purified polyclonal anti-MYL6B (100 ug) 2. Detection antibody: mouse purified polyclonal anti-MYL6B (20 ug) *Reagents are sufficient for at least 1-2 x 96 well plates using recommended protocols.
<b>Storage Instruction</b>	Store reagents of the antibody pair set at -20°C or lower. Please aliquot to avoid repeated freeze thaw cycle. Reagents should be returned to -20°C storage immediately after use.

### Applications

- ELISA Pair (Recombinant protein)

[Protocol Download](#)

## Gene Info — MYL6B

**Entrez GeneID** [140465](#)**Gene Name** MYL6B**Gene Alias** MLC1SA**Gene Description** myosin, light chain 6B, alkali, smooth muscle and non-muscle**Omim ID** [609930](#)**Gene Ontology** [Hyperlink](#)

**Gene Summary** Myosin is a hexameric ATPase cellular motor protein. It is composed of two heavy chains, two nonphosphorylatable alkali light chains, and two phosphorylatable regulatory light chains. This gene encodes a myosin alkali light chain expressed in both slow-twitch skeletal muscle and in nonmuscle tissue. [provided by RefSeq]

**Other Designations** myosin alkali light chain 1 slow a|myosin light chain 1 slow a|myosin light chain 1, slow-twitch muscle A isoform|myosin, light polypeptide 6B, alkali, smooth muscle and non-muscle|smooth muscle and non-muscle myosin alkali light chain 6B