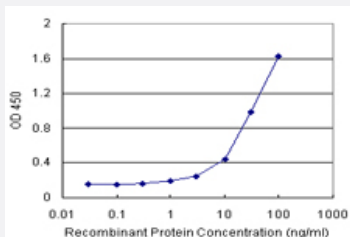


ASB9 (Human) Matched Antibody Pair

Catalog # H00140462-AP11 Size 1 Set

Applications



Sandwich ELISA detection sensitivity ranging from 3 ng/ml to 100 ng/ml.

Specification

Product Description	This antibody pair set comes with a matched antibody pair to detect and quantify the protein level of human ASB9.
Reactivity	Human
Quality Control Testing	Standard curve using recombinant protein (H00140462-P01) as an analyte. Sandwich ELISA detection sensitivity ranging from 3 ng/ml to 100 ng/ml.
Supplied Product	Antibody pair set content: 1. Capture antibody: rabbit MaxPab® affinity purified polyclonal anti-ASB9 (100 ug) 2. Detection antibody: mouse monoclonal anti-ASB9, IgG1 Kappa (20 ug) *Reagents are sufficient for at least 1-2 x 96 well plates using recommended protocols.
Storage Instruction	Store reagents of the antibody pair set at -20°C or lower. Please aliquot to avoid repeated freeze thaw cycle. Reagents should be returned to -20°C storage immediately after use.

Applications

- ELISA Pair (Recombinant protein)

[Protocol Download](#)

Gene Info — ASB9

Entrez GeneID	140462
Gene Name	ASB9
Gene Alias	DKFZp564L0862, FLJ20636, MGC4954
Gene Description	ankyrin repeat and SOCS box-containing 9
Gene Ontology	Hyperlink
Other Designations	OTTHUMP00000022955 OTTHUMP00000022956