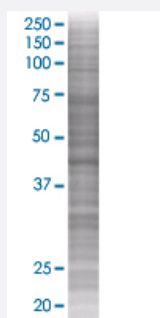


# ASB6 293T Cell Transient Overexpression Lysate(Denatured)

Catalog # H00140459-T02

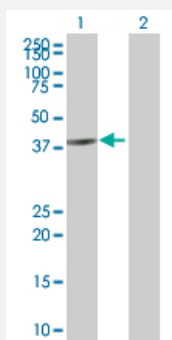
Size 100 uL

## Applications



### SDS-PAGE Gel

ASB6 transfected lysate.



### Western Blot

Lane 1: ASB6 transfected lysate ( 47.1 KDa)

Lane 2: Non-transfected lysate.

## Specification

**Transfected Cell Line** 293T

**Plasmid** pCMV-ASB6 full-length

**Host** Human

**Theoretical MW (kDa)** 46.42

**Quality Control Testing** Transient overexpression cell lysate was tested with Anti-ASB6 antibody ([H00140459-B02](#)) by Western Blots.  
SDS-PAGE Gel  
ASB6 transfected lysate.  
Western Blot  
Lane 1: ASB6 transfected lysate ( 47.1 KDa)  
Lane 2: Non-transfected lysate.

**Storage Buffer**

1X Sample Buffer (50 mM Tris-HCl, 2% SDS, 10% glycerol, 300 mM 2-mercaptoethanol, 0.01% Bromophenol blue)

**Storage Instruction**

Store at -80°C. Aliquot to avoid repeated freezing and thawing.

## Applications

- Western Blot

## Gene Info — ASB6

**Entrez GeneID**

[140459](#)

**GeneBank Accession#**

[NM\\_017873](#)

**Protein Accession#**

[NP\\_060343](#)

**Gene Name**

ASB6

**Gene Alias**

FLJ20548, MGC1024

**Gene Description**

ankyrin repeat and SOCS box-containing 6

**Gene Ontology**

[Hyperlink](#)

**Gene Summary**

The protein encoded by this gene belongs to a family of ankyrin repeat proteins that, along with four other protein families, contain a C-terminal SOCS box motif. Growing evidence suggests that the SOCS box, similar to the F-box, acts as a bridge between specific substrate-binding domains and the more generic proteins that comprise a large family of E3 ubiquitin protein ligases. [provided by RefSeq]

**Other Designations**

OTTHUMP00000022342|OTTHUMP00000022343