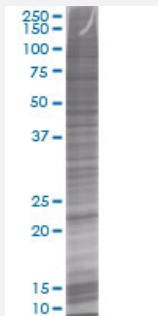


ASB6 293T Cell Transient Overexpression Lysate(Denatured)

Catalog # H00140459-T01

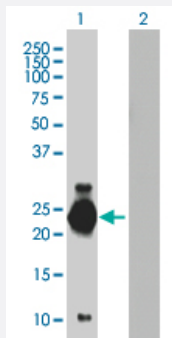
Size 100 uL

Applications



SDS-PAGE Gel

ASB6 transfected lysate



Western Blot

Lane 1: ASB6 transfected lysate (21.78 KDa).

Lane 2: Non-transfected lysate.

Specification

Transfected Cell Line 293T

Plasmid pCMV-ASB6 full-length

Host Human

Theoretical MW (kDa) 21.78

Quality Control Testing Transient overexpression cell lysate was tested with Anti-ASB6 antibody ([H00140459-B01](#)) by Western Blots.
SDS-PAGE Gel
ASB6 transfected lysate
Western Blot
Lane 1: ASB6 transfected lysate (21.78 KDa).
Lane 2: Non-transfected lysate.

Storage Buffer	1X Sample Buffer (50 mM Tris-HCl, 2% SDS, 10% glycerol, 300 mM 2-mercaptoethanol, 0.01% Bromophenol blue)
Storage Instruction	Store at -80°C. Aliquot to avoid repeated freezing and thawing.

Applications

- Western Blot

Gene Info — ASB6

Entrez GeneID	140459
GeneBank Accession#	BC001719
Protein Accession#	AAH01719
Gene Name	ASB6
Gene Alias	FLJ20548, MGC1024
Gene Description	ankyrin repeat and SOCS box-containing 6
Gene Ontology	Hyperlink
Gene Summary	The protein encoded by this gene belongs to a family of ankyrin repeat proteins that, along with four other protein families, contain a C-terminal SOCS box motif. Growing evidence suggests that the SOCS box, similar to the F-box, acts as a bridge between specific substrate-binding domains and the more generic proteins that comprise a large family of E3 ubiquitin protein ligases. [provided by RefSeq]
Other Designations	OTTHUMP00000022342 OTTHUMP00000022343