

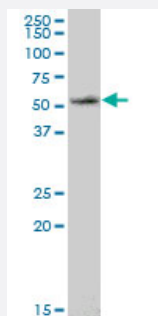
MaxPab®

ASB6 purified MaxPab mouse polyclonal antibody (B02P)

Catalog # H00140459-B02P

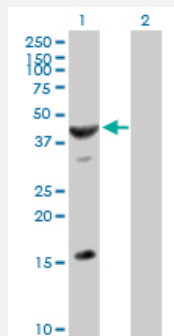
Size 50 ug

Applications



Western Blot (Tissue lysate)

ASB6 MaxPab polyclonal antibody. Western Blot analysis of ASB6 expression in human liver.



Western Blot (Transfected lysate)

Western Blot analysis of ASB6 expression in transfected 293T cell line ([H00140459-T02](#)) by ASB6 MaxPab polyclonal antibody.

Lane 1: ASB6 transfected lysate(46.31 KDa).

Lane 2: Non-transfected lysate.

Specification

Product Description

Mouse polyclonal antibody raised against a full-length human ASB6 protein.

Immunogen

ASB6 (NP_060343.1, 1 a.a. ~ 421 a.a) full-length human protein.

Sequence

MPFLHGFRRIIFEYQPLVDAILGSLGIQDPERQESLDRPSYVASEESRILVLTELLERKAHSPFYQEG
VSNALLKMAELGLTRAADVLLRHGANLNFEDPVTYYTALHIAVLRNQPDMVELLVHHGADVNRD
RIHESSPLDLASEEPERLPCLQRLLDLGADVNAADKHGKTALLHALASSDGVQIHNTENIRLLLEG
GADVKAATKDGDTVFTCIIFLLGETVGGDKEEAQMINRFCFQVTRLLLAHGADPSECPAHESLTHI
CLKSFKLHFPLLRFLLESGAAYNCSLHGASCWSGFHIIIFERLCSHPGCTEDESADLLRKAETVL
DLMVTNSQKLQLPENFDIHPVGLAEKIQALHFSRLRQLESYPPPLKHLRCRVAIRLYLQPWPVDVKV
KALPLPDRLKWYLLSEHSGSVEDDI

Host	Mouse
Reactivity	Human
Quality Control Testing	Antibody reactive against mammalian transfected lysate.
Storage Buffer	In 1x PBS, pH 7.4
Storage Instruction	Store at -20°C or lower. Aliquot to avoid repeated freezing and thawing.

Applications

- Western Blot (Tissue lysate)

ASB6 MaxPab polyclonal antibody. Western Blot analysis of ASB6 expression in human liver.

[Protocol Download](#)

- Western Blot (Transfected lysate)

Western Blot analysis of ASB6 expression in transfected 293T cell line ([H00140459-T02](#)) by ASB6 MaxPab polyclonal antibody.

Lane 1: ASB6 transfected lysate(46.31 KDa).

Lane 2: Non-transfected lysate.

[Protocol Download](#)

Gene Info — ASB6

Entrez GeneID	140459
GeneBank Accession#	NM_017873
Protein Accession#	NP_060343.1
Gene Name	ASB6
Gene Alias	FLJ20548, MGC1024
Gene Description	ankyrin repeat and SOCS box-containing 6
Gene Ontology	Hyperlink
Gene Summary	The protein encoded by this gene belongs to a family of ankyrin repeat proteins that, along with four other protein families, contain a C-terminal SOCS box motif. Growing evidence suggests that the SOCS box, similar to the F-box, acts as a bridge between specific substrate-binding domains and the more generic proteins that comprise a large family of E3 ubiquitin protein ligases. [provided by RefSeq]

Other DesignationsOTTHUMP00000022342|OTTHUMP00000022343
