

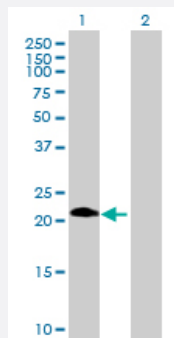
MaxPab®

# ASB6 purified MaxPab mouse polyclonal antibody (B01P)

Catalog # H00140459-B01P

Size 50 ug

## Applications



### Western Blot (Transfected lysate)

Western Blot analysis of ASB6 expression in transfected 293T cell line ([H00140459-T01](#)) by ASB6 MaxPab polyclonal antibody.

Lane 1: ASB6 transfected lysate(21.78 KDa).

Lane 2: Non-transfected lysate.

## Specification

Product Description	Mouse polyclonal antibody raised against a full-length human ASB6 protein.
Immunogen	ASB6 (AAH01719, 1 a.a. ~ 197 a.a) full-length human protein.
Sequence	MPFLHGFRRRIIFEYQPLVDAIPGSLGIQDPERQESLDRPSYVASEESRILVLTELLERKAHSPFYQE GVSNALLKMAELGLTRAADVLLRHGANLNFEDPVTYYTALHIAVLRNQPDMEVLLVHHGADVNR DREKLLCSMLWPAATGCRSTILRTFVSYWKEGQTSRPPPKMGTCSPASSSCLVRPWEGTKRR PR
Host	Mouse
Reactivity	Human
Quality Control Testing	Antibody reactive against mammalian transfected lysate.
Storage Buffer	In 1x PBS, pH 7.4
Storage Instruction	Store at -20°C or lower. Aliquot to avoid repeated freezing and thawing.

## Applications

- Western Blot (Transfected lysate)

Western Blot analysis of ASB6 expression in transfected 293T cell line ([H00140459-T01](#)) by ASB6 MaxPab polyclonal antibody.

Lane 1: ASB6 transfected lysate(21.78 KDa).

Lane 2: Non-transfected lysate.

[Protocol Download](#)

## Gene Info — ASB6

Entrez GeneID	<a href="#">140459</a>
---------------	------------------------

GeneBank Accession#	<a href="#">BC001719</a>
---------------------	--------------------------

Protein Accession#	<a href="#">AAH01719</a>
--------------------	--------------------------

Gene Name	ASB6
-----------	------

Gene Alias	FLJ20548, MGC1024
------------	-------------------

Gene Description	ankyrin repeat and SOCS box-containing 6
------------------	--

Gene Ontology	<a href="#">Hyperlink</a>
---------------	---------------------------

Gene Summary	The protein encoded by this gene belongs to a family of ankyrin repeat proteins that, along with four other protein families, contain a C-terminal SOCS box motif. Growing evidence suggests that the SOCS box, similar to the F-box, acts as a bridge between specific substrate-binding domains and the more generic proteins that comprise a large family of E3 ubiquitin protein ligases. [provided by RefSeq]
--------------	--

Other Designations	OTTHUMP00000022342 OTTHUMP00000022343
--------------------	---------------------------------------