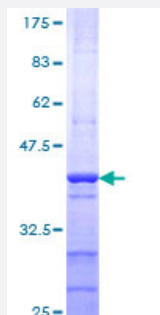


TAF1L (Human) Recombinant Protein (Q01)

Catalog # H00138474-Q01

Size 25 ug, 10 ug

Applications



Specification

Product Description	Human TAF1L partial ORF (NP_722516, 1532 a.a. - 1641 a.a.) recombinant protein with GST-tag at N-terminal.
Sequence	NIVTQKMMAVPDSWPFHHPVNKKFVPDYKMINPVDLETIRKNISKHKYQSRESFLDDVNLILAN SVKYNPESQYTKTAQEIVNICYQTITEYDEHLTQLEKDICTAK
Host	Wheat Germ (in vitro)
Theoretical MW (kDa)	37.84
Preparation Method	in vitro wheat germ expression system
Purification	Glutathione Sepharose 4 Fast Flow
Quality Control Testing	12.5% SDS-PAGE Stained with Coomassie Blue.
Storage Buffer	50 mM Tris-HCl, 10 mM reduced Glutathione, pH=8.0 in the elution buffer.
Storage Instruction	Store at -80°C. Aliquot to avoid repeated freezing and thawing.
Note	Best use within three months from the date of receipt of this protein.

Applications

- Enzyme-linked Immunoabsorbent Assay
- Western Blot (Recombinant protein)
- Antibody Production
- Protein Array

Gene Info — TAF1L

Entrez GeneID	138474
GeneBank Accession#	NM_153809
Protein Accession#	NP_722516
Gene Name	TAF1L
Gene Alias	MGC134910, TAF2A2
Gene Description	TAF1 RNA polymerase II, TATA box binding protein (TBP)-associated factor, 210kDa-like
Omim ID	607798
Gene Ontology	Hyperlink
Gene Summary	This locus is intronless, and apparently arose in the primate lineage from retrotransposition of the transcript from the multi-exon TAF1 locus on the X chromosome. The gene is expressed in male germ cells, and the product has been shown to function interchangeably with the TAF1 product. [provided by RefSeq]
Other Designations	TAF1-like RNA polymerase II, TATA box binding protein (TBP)-associated factor, 210 kD[TAF1-like RNA polymerase II, TATA box binding protein (TBP)-associated factor, 210kDa]TBP-associated factor RNA polymerase 1-like

Pathway

- [Basal transcription factors](#)