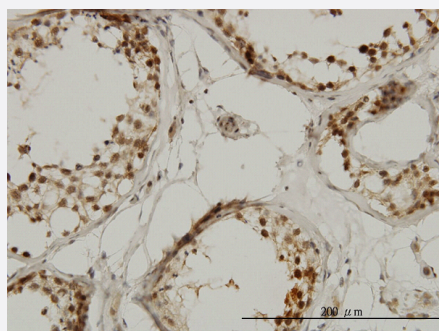


TAF1L monoclonal antibody (M01), clone 1E12

Catalog # H00138474-M01

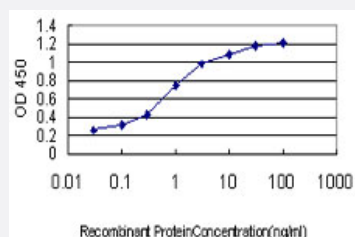
Size 100 ug

Applications



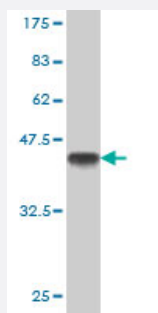
Immunohistochemistry (Formalin/PFA-fixed paraffin-embedded sections)

Immunoperoxidase of monoclonal antibody to TAF1L on formalin-fixed paraffin-embedded human testis. [antibody concentration 1 ug/ml]



Sandwich ELISA (Recombinant protein)

Detection limit for recombinant GST tagged TAF1L is approximately 0.03ng/ml as a capture antibody.



Western Blot detection against Immunogen (37.84 KDa) .

Specification

Product Description

Mouse monoclonal antibody raised against a partial recombinant TAF1L.

Immunogen	TAF1L (NP_722516, 1532 a.a. ~ 1641 a.a) partial recombinant protein with GST tag. MW of the GST tag alone is 26 KDa.
Sequence	NIVTQKMMAVPDSWPFHHPVNKKFVPDYKMINPVDLETIRKNISKHKYQSRESFLDDVNLILAN SVKYNGPESQYTKTAQEIVNICYQTITEYDEHLTQLEKDICTAK
Host	Mouse
Reactivity	Human
Isotype	IgG2a Kappa
Quality Control Testing	Antibody Reactive Against Recombinant Protein. Western Blot detection against Immunogen (37.84 KDa) .
Storage Buffer	In 1x PBS, pH 7.4
Storage Instruction	Store at -20°C or lower. Aliquot to avoid repeated freezing and thawing.

Applications

- Western Blot (Recombinant protein)

[Protocol Download](#)

- Immunohistochemistry (Formalin/PFA-fixed paraffin-embedded sections)

Immunoperoxidase of monoclonal antibody to TAF1L on formalin-fixed paraffin-embedded human testis. [antibody concentration 1 ug/ml]

[Protocol Download](#)

- Sandwich ELISA (Recombinant protein)

Detection limit for recombinant GST tagged TAF1L is approximately 0.03ng/ml as a capture antibody.

[Protocol Download](#)

- ELISA

Gene Info — TAF1L

Entrez GeneID	138474
GeneBank Accession#	NM_153809

Protein Accession#	NP_722516
Gene Name	TAF1L
Gene Alias	MGC134910, TAF2A2
Gene Description	TAF1 RNA polymerase II, TATA box binding protein (TBP)-associated factor, 210kDa-like
Omim ID	607798
Gene Ontology	Hyperlink
Gene Summary	This locus is intronless, and apparently arose in the primate lineage from retrotransposition of the transcript from the multi-exon TAF1 locus on the X chromosome. The gene is expressed in male germ cells, and the product has been shown to function interchangeably with the TAF1 product. [provided by RefSeq]
Other Designations	TAF1-like RNA polymerase II, TATA box binding protein (TBP)-associated factor, 210 kD[TAF1-like RNA polymerase II, TATA box binding protein (TBP)-associated factor, 210kDa[TBP-associated factor RNA polymerase 1-like

Pathway

- [Basal transcription factors](#)