

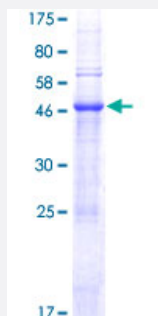
## Full-Length

# TRY1 (Human) Recombinant Protein (P01)

Catalog # H00136541-P01

Size 25 ug, 10 ug

## Applications



## Specification

### Product Description

Human TRY1 full-length ORF ( NP\_001001317.1, 1 a.a. - 241 a.a.) recombinant protein with GST-tag at N-terminal.

### Sequence

MKFILLWALLNLTVALAFNPDTVSSTPPYLVLKSDYLPAGVLIHPLWVITAAHCNLPKLRVILGV  
TIPADSNEKHLQVIGYEKMIHHPHFSVTSIDHDIMLIKLTEAELNDYVKLANLPYQTISENTMCSVST  
WSYNVCDIYKEPDSLQTVNISVISKPQCRDAYKTYNITENMLCVGMPGRRQPCKEVSAAPAICNG  
MLQGILSFADGCVLRADVGIYAKIFYIPWIENVIQNN

### Host

Wheat Germ (in vitro)

### Theoretical MW (kDa)

53.5

### Preparation Method

[in vitro wheat germ expression system](#)

### Purification

Glutathione Sepharose 4 Fast Flow

### Quality Control Testing

12.5% SDS-PAGE Stained with Coomassie Blue.

### Storage Buffer

50 mM Tris-HCl, 10 mM reduced Glutathione, pH=8.0 in the elution buffer.

### Storage Instruction

Store at -80°C. Aliquot to avoid repeated freezing and thawing.

### Note

Best use within three months from the date of receipt of this protein.

## Applications

- Enzyme-linked Immunoabsorbent Assay
- Western Blot (Recombinant protein)
- Antibody Production
- Protein Array

## Gene Info — TRYX3

Entrez GeneID [136541](#)

GeneBank Accession# [NM\\_001001317.1](#)

Protein Accession# [NP\\_001001317.1](#)

Gene Name TRYX3

Gene Alias FLJ16649, MGC35022, TRY1, UNQ2540

Gene Description trypsin X3

Gene Ontology [Hyperlink](#)

**Gene Summary** This gene encodes a member of the trypsin family of serine proteases. This gene and several related trypsinogen genes are localized to the T cell receptor beta locus on chromosome 7. This gene was previously described as a trypsinogen-like pseudogene, but it is now thought to be a protein-coding gene. [provided by RefSeq]

Other Designations -