

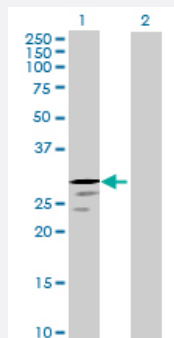
MaxPab®

TRY1 MaxPab mouse polyclonal antibody (B01P)

Catalog # H00136541-B01P

Size 50 ug

Applications



Western Blot (Transfected lysate)

Western Blot analysis of TRYX3 expression in transfected 293T cell line ([H00136541-T01](#)) by TRYX3 MaxPab polyclonal antibody.

Lane 1: TRY1 transfected lysate(26.51 KDa).

Lane 2: Non-transfected lysate.

Specification

Product Description

Mouse polyclonal antibody raised against a full-length human TRY1 protein.

Immunogen

TRY1 (NP_001001317, 1 a.a. ~ 241 a.a) full-length human protein.

Sequence

MKFILLWALLNLTVALAFNPDYTVSSTPPYLVLKSDYLPAGVLIHPLWVITAAHCNLPKLRVILGV
TIPADSNEKHLQVIGYEKMIHHPHFSVTSIDHDIKLIKTEAELNDYVKLANLPYQTISENTMCSVST
WSYNVCDIYKEPDSLQTVNISVISKPQCRDAYKTYNITENMLCVGMPGRRQPCKEVSAAPAICNG
MLQGILSFADGCVLRADVGYAKIFYIPWIENVIQNN

Host

Mouse

Reactivity

Human

Quality Control Testing

Antibody reactive against mammalian transfected lysate.

Storage Buffer

In 1x PBS, pH 7.4

Storage Instruction

Store at -20°C or lower. Aliquot to avoid repeated freezing and thawing.

Applications

- Western Blot (Transfected lysate)

Western Blot analysis of TRYX3 expression in transfected 293T cell line ([H00136541-T01](#)) by TRYX3 MaxPab polyclonal antibody.

Lane 1: TRY1 transfected lysate(26.51 KDa).

Lane 2: Non-transfected lysate.

[Protocol Download](#)

Gene Info — TRYX3

Entrez GeneID	136541
GeneBank Accession#	NM_001001317
Protein Accession#	NP_001001317
Gene Name	TRYX3
Gene Alias	FLJ16649, MGC35022, TRY1, UNQ2540
Gene Description	trypsin X3
Gene Ontology	Hyperlink
Gene Summary	This gene encodes a member of the trypsin family of serine proteases. This gene and several related trypsinogen genes are localized to the T cell receptor beta locus on chromosome 7. This gene was previously described as a trypsinogen-like pseudogene, but it is now thought to be a protein-coding gene. [provided by RefSeq]
Other Designations	-