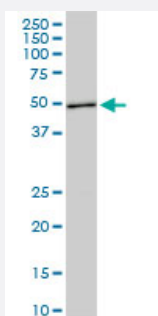


# ASB10 monoclonal antibody (M02), clone 1F3

Catalog # H00136371-M02

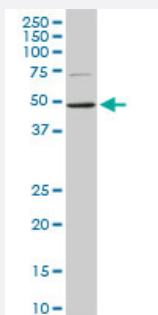
Size 100 ug

## Applications



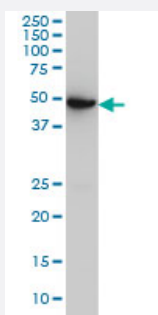
### Western Blot (Cell lysate)

ASB10 monoclonal antibody (M02), clone 1F3. Western Blot analysis of ASB10 expression in PC-12 ( Cat # L012V1 ).



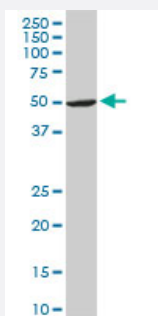
### Western Blot (Cell lysate)

ASB10 monoclonal antibody (M02), clone 1F3. Western Blot analysis of ASB10 expression in Raw 264.7 ( Cat # L024V1 ).



### Western Blot (Cell lysate)

ASB10 monoclonal antibody (M02), clone 1F3 Western Blot analysis of ASB10 expression in A-431 ( Cat # L015V1 ).

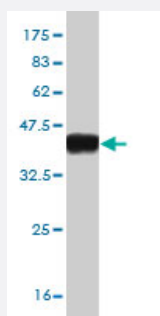
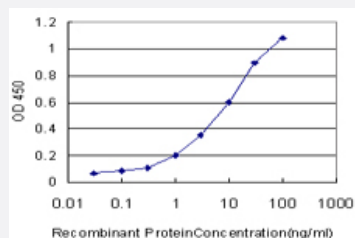


### Western Blot (Cell lysate)

ASB10 monoclonal antibody (M02), clone 1F3. Western Blot analysis of ASB10 expression in NIH/3T3 ( Cat # L018V1 ).

## Sandwich ELISA (Recombinant protein)

Detection limit for recombinant GST tagged ASB10 is approximately 0.1ng/ml as a capture antibody.



Western Blot detection against Immunogen (37.4 KDa) .

## Specification

<b>Product Description</b>	Mouse monoclonal antibody raised against a partial recombinant ASB10.
<b>Immunogen</b>	ASB10 (NP_001135931, 48 a.a. ~ 153 a.a) partial recombinant protein with GST tag. MW of the GST tag alone is 26 KDa.
<b>Sequence</b>	MSWSPEECKGQGGEPLDDRHPLCARLVEKPSRGSEEHLKSGPGPIVTRTASGPALAFWQAVLAG DVGCVSRILADSSTGLAPDSVFDTS DPERWRD FRFNIRALRLW
<b>Host</b>	Mouse
<b>Reactivity</b>	Human, Mouse, Rat
<b>Isotype</b>	IgG2a Kappa
<b>Quality Control Testing</b>	Antibody Reactive Against Recombinant Protein. Western Blot detection against Immunogen (37.4 KDa) .
<b>Storage Buffer</b>	In 1x PBS, pH 7.4
<b>Storage Instruction</b>	Store at -20°C or lower. Aliquot to avoid repeated freezing and thawing.

## Applications

- Western Blot (Cell lysate)

ASB10 monoclonal antibody (M02), clone 1F3. Western Blot analysis of ASB10 expression in PC-12 ( Cat # L012V1 ).

[Protocol Download](#)

- Western Blot (Cell lysate)

ASB10 monoclonal antibody (M02), clone 1F3. Western Blot analysis of ASB10 expression in Raw 264.7 ( Cat # L024V1 ).

[Protocol Download](#)

- Western Blot (Cell lysate)

ASB10 monoclonal antibody (M02), clone 1F3 Western Blot analysis of ASB10 expression in A-431 ( Cat # L015V1 ).

[Protocol Download](#)

- Western Blot (Cell lysate)

ASB10 monoclonal antibody (M02), clone 1F3. Western Blot analysis of ASB10 expression in NIH/3T3 ( Cat # L018V1 ).

[Protocol Download](#)

- Western Blot (Recombinant protein)

[Protocol Download](#)

- Sandwich ELISA (Recombinant protein)

Detection limit for recombinant GST tagged ASB10 is approximately 0.1ng/ml as a capture antibody.

[Protocol Download](#)

- ELISA

## Gene Info — ASB10

Entrez GeneID [136371](#)

GeneBank Accession# [NM\\_001142459](#)

Protein Accession# [NP\\_001135931](#)

Gene Name ASB10

Gene Alias -

Gene Description ankyrin repeat and SOCS box-containing 10

**Gene Ontology**[Hyperlink](#)**Gene Summary**

The protein encoded by this gene is a member of the ankyrin repeat and SOCS box-containing (ASB) family of proteins. The SOCS box serves to couple suppressor of cytokine signaling (SOCS) proteins and their binding partners with the elongin B and C complex, possibly targeting them for degradation. Multiple alternatively spliced transcript variants have been described for this gene. [provided by RefSeq]

**Other Designations**

-