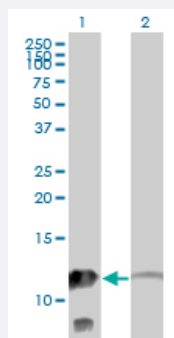


MTPN monoclonal antibody (M14), clone 1F3

Catalog # H00136319-M14

Size 100 ug

Applications

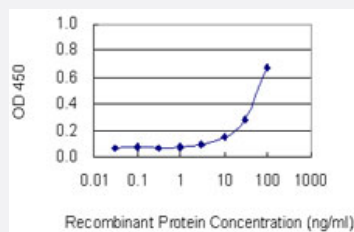


Western Blot (Transfected lysate)

Western Blot analysis of MTPN expression in transfected 293T cell line by MTPN monoclonal antibody (M14), clone 1F3.

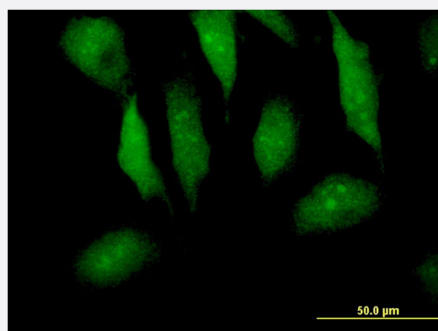
Lane 1: MTPN transfected lysate (12.9 KDa).

Lane 2: Non-transfected lysate.



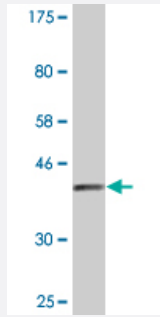
Sandwich ELISA (Recombinant protein)

Detection limit for recombinant GST tagged MTPN is 3 ng/ml as a capture antibody.



Immunofluorescence

Immunofluorescence of monoclonal antibody to MTPN on HeLa cell . [antibody concentration 10 ug/ml]



Western Blot detection against Immunogen (38.72 KDa) .

Specification

Product Description	Mouse monoclonal antibody raised against a full-length recombinant MTPN.
Immunogen	MTPN (AAH28093, 1 a.a. ~ 118 a.a) full-length recombinant protein with GST tag. MW of the GST tag alone is 26 KDa.
Sequence	MCDKEFMWALKNGGLDEVKDYVAKGEDVNRTLEGGRKPLHYAADCGQLEILEFLLKGDINAPDKHHITPLLSAVYEGHVSCVKLLLSKGADKTVKGPDGLTAFEATDNQAIKALLQ
Host	Mouse
Reactivity	Human
Isotype	IgG2a Kappa
Quality Control Testing	Antibody Reactive Against Recombinant Protein. Western Blot detection against Immunogen (38.72 KDa) .
Storage Buffer	In 1x PBS, pH 7.4
Storage Instruction	Store at -20°C or lower. Aliquot to avoid repeated freezing and thawing.

Applications

- Western Blot (Transfected lysate)

Western Blot analysis of MTPN expression in transfected 293T cell line by MTPN monoclonal antibody (M14), clone 1F3.

Lane 1: MTPN transfected lysate(12.9 KDa).

Lane 2: Non-transfected lysate.

[Protocol Download](#)

- Western Blot (Recombinant protein)

[Protocol Download](#)

- Sandwich ELISA (Recombinant protein)

Detection limit for recombinant GST tagged MTPN is 3 ng/ml as a capture antibody.

[Protocol Download](#)

- ELISA

- Immunofluorescence

Immunofluorescence of monoclonal antibody to MTPN on HeLa cell . [antibody concentration 10 ug/ml]

Gene Info — MTPN

Entrez GeneID [136319](#)

GeneBank Accession# [BC028093](#)

Protein Accession# [AAH28093](#)

Gene Name MTPN

Gene Alias FLJ31098, FLJ99857, GCDP, V-1

Gene Description myotrophin

Omim ID [606484](#)

Gene Ontology [Hyperlink](#)

Gene Summary

The transcript produced from this gene is bi-cistronic and can encode both myotrophin and leucine zipper protein 6. The myotrophin protein is associated with cardiac hypertrophy, where it is involved in the conversion of NFkappa B p50-p65 heterodimers to p50-p50 and p65-p65 homodimers . This protein also has a potential function in cerebellar morphogenesis, and it may be involved in the differentiation of cerebellar neurons, particularly of granule cells. A cryptic ORF at the 3' end of this transcript uses a novel internal ribosome entry site and a non-AUG translation initiation codon to produce leucine zipper protein 6, a 6.4 kDa tumor antigen that is associated with myeloproliferative disease. [provided by RefSeq]

Other Designations granule cell differentiation protein