

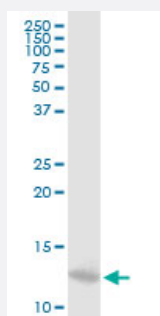
MaxPab®

MTPN purified MaxPab mouse polyclonal antibody (B03P)

Catalog # H00136319-B03P

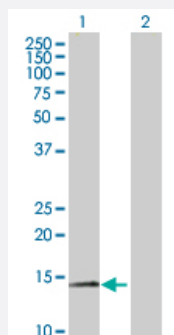
Size 50 ug

Applications



Western Blot (Cell lysate)

MTPN MaxPab polyclonal antibody. Western Blot analysis of MTPN expression in Jurkat.

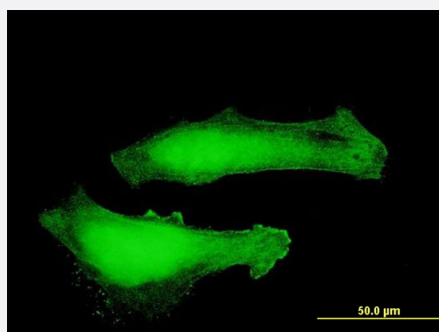


Western Blot (Transfected lysate)

Western Blot analysis of MTPN expression in transfected 293T cell line ([H00136319-T04](#)) by MTPN MaxPab polyclonal antibody.

Lane 1: MTPN transfected lysate(12.90 KDa).

Lane 2: Non-transfected lysate.



Immunofluorescence

Immunofluorescence of purified MaxPab antibody to MTPN on HeLa cell. [antibody concentration 10 ug/ml]

Specification

Product Description

Mouse polyclonal antibody raised against a full-length human MTPN protein.

Immunogen	MTPN (NP_665807.1, 1 a.a. ~ 118 a.a) full-length human protein.
Sequence	MCDKEFMWALKNGDLDEVKDYVAKGEDVNRTLGGGRKPLHYAADCGQLEILEFLLLKGADINAPDKHHITPLLSAVYEGHVSCVKLLLSKGADKTVKGPDGLTAFEATDNQAIKALLQ
Host	Mouse
Reactivity	Human
Quality Control Testing	Antibody reactive against mammalian transfected lysate.
Storage Buffer	In 1x PBS, pH 7.4
Storage Instruction	Store at -20°C or lower. Aliquot to avoid repeated freezing and thawing.

Applications

- Western Blot (Cell lysate)

MTPN MaxPab polyclonal antibody. Western Blot analysis of MTPN expression in Jurkat.

[Protocol Download](#)

- Western Blot (Transfected lysate)

Western Blot analysis of MTPN expression in transfected 293T cell line ([H00136319-T04](#)) by MTPN MaxPab polyclonal antibody.

Lane 1: MTPN transfected lysate(12.90 KDa).

Lane 2: Non-transfected lysate.

[Protocol Download](#)

- Immunofluorescence

Immunofluorescence of purified MaxPab antibody to MTPN on HeLa cell. [antibody concentration 10 ug/ml]

Gene Info — MTPN

Entrez GeneID	136319
GeneBank Accession#	NM_145808
Protein Accession#	NP_665807.1
Gene Name	MTPN
Gene Alias	FLJ31098, FLJ99857, GCDP, V-1

Gene Description	myotrophin
Omim ID	606484
Gene Ontology	Hyperlink
Gene Summary	<p>The transcript produced from this gene is bi-cistronic and can encode both myotrophin and leucine zipper protein 6. The myotrophin protein is associated with cardiac hypertrophy, where it is involved in the conversion of NFkappa B p50-p65 heterodimers to p50-p50 and p65-p65 homodimers . This protein also has a potential function in cerebellar morphogenesis, and it may be involved in the differentiation of cerebellar neurons, particularly of granule cells. A cryptic ORF at the 3' end of this transcript uses a novel internal ribosome entry site and a non-AUG translation initiation codon to produce leucine zipper protein 6, a 6.4 kDa tumor antigen that is associated with myeloproliferative disease. [provided by RefSeq</p>
Other Designations	granule cell differentiation protein