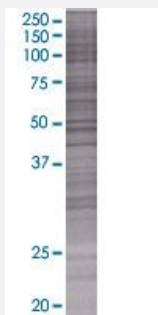


RAET1E 293T Cell Transient Overexpression Lysate(Denatured)

Catalog # H00135250-T01

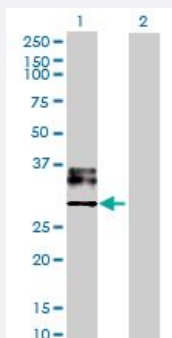
Size 100 uL

Applications



SDS-PAGE Gel

RAET1E transfected lysate.



Western Blot

Lane 1: RAET1E transfected lysate (30.1 KDa)

Lane 2: Non-transfected lysate.

Specification

Transfected Cell Line	293T
Plasmid	pCMV-RAET1E full-length
Host	Human
Theoretical MW (kDa)	30.1
Quality Control Testing	<p>Transient overexpression cell lysate was tested with Anti-RAET1E antibody (H00135250-B01) by Western Blots.</p> <p>SDS-PAGE Gel</p> <p>RAET1E transfected lysate.</p> <p>Western Blot</p> <p>Lane 1: RAET1E transfected lysate (30.1 KDa)</p> <p>Lane 2: Non-transfected lysate.</p>

Storage Buffer

1X Sample Buffer (50 mM Tris-HCl, 2% SDS, 10% glycerol, 300 mM 2-mercaptoethanol, 0.01% Bromophenol blue)

Storage Instruction

Store at -80°C. Aliquot to avoid repeated freezing and thawing.

Applications

- Western Blot

Gene Info — RAET1E

Entrez GeneID[135250](#)**GeneBank Accession#**[BC103694](#)**Protein Accession#**[AAI03695](#)**Gene Name**

RAET1E

Gene Alias

LETAL, MGC125308, MGC125309, RAET1E2, ULBP4, bA350J20.7

Gene Description

retinoic acid early transcript 1E

Omim ID[609243](#)**Gene Ontology**[Hyperlink](#)**Gene Summary**

Members of the RAET1 family, such as RAET1E, are major histocompatibility complex (MHC) class I-related genes located within a 180-kb cluster on chromosome 6q24.2-q25.3. RAET1 proteins contain MHC class I-like alpha-1 and alpha-2 domains. RAET1E and RAET1G (MIM 609244) differ from the other RAET1 proteins (e.g., RAET1I, or ULBP1; MIM 605697) in that they have type I membrane-spanning sequences at their C termini rather than glycosylphosphatidylinositol anchor sequences. (Radosavljevic et al., 2002 [PubMed 11827464]).[supplied by OMIM]

Other Designations

OTTHUMP00000017404|lymphocyte effector toxicity activation ligand

Pathway

- [Natural killer cell mediated cytotoxicity](#)

Disease

- [Genetic Predisposition to Disease](#)