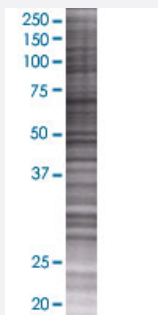


PACRG 293T Cell Transient Overexpression Lysate(Denatured)

Catalog # H00135138-T01

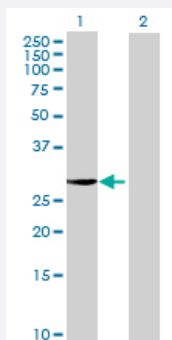
Size 100 uL

Applications



SDS-PAGE Gel

PACRG transfected lysate.



Western Blot

Lane 1: PACRG transfected lysate (28.38 KDa)

Lane 2: Non-transfected lysate.

Specification

Transfected Cell Line 293T

Plasmid pCMV-PACRG full-length

Host Human

Theoretical MW (kDa) 28.38

Quality Control Testing Transient overexpression cell lysate was tested with Anti-PACRG antibody ([H00135138-B01](#)) by Western Blots.
SDS-PAGE Gel
PACRG transfected lysate.
Western Blot
Lane 1: PACRG transfected lysate (28.38 KDa)
Lane 2: Non-transfected lysate.

Storage Buffer	1X Sample Buffer (50 mM Tris-HCl, 2% SDS, 10% glycerol, 300 mM 2-mercaptoethanol, 0.01% Bromophenol blue)
Storage Instruction	Store at -80°C. Aliquot to avoid repeated freezing and thawing.

Applications

- Western Blot

Gene Info — PACRG

Entrez GeneID	135138
GeneBank Accession#	BC044227.1
Protein Accession#	NP_001073847.1
Gene Name	PACRG
Gene Alias	FLJ32724, GLUP, HAK005771, PARK2CRG, RP3-495O10.2
Gene Description	PARK2 co-regulated
Omim ID	607572 608427
Gene Ontology	Hyperlink

Gene Summary	This gene encodes a protein that is conserved across metazoans. In vertebrates, this gene is linked in a head-to-head arrangement with the adjacent parkin gene, which is associated with autosomal recessive juvenile Parkinson's disease. These genes are co-regulated in various tissues and they share a bi-directional promoter. Both genes are associated with susceptibility to leprosy. The parkin co-regulated gene protein forms a large molecular complex with chaperones, including heat shock proteins 70 and 90, and chaperonin components. This protein is also a component of Lewy bodies in Parkinson's disease patients, and it suppresses unfolded Pael receptor-induced neuronal cell death. Multiple transcript variants encoding different isoforms have been found for this gene. [provided by RefSeq]
--------------	---

Other Designations	OTTHUMP00000017729 OTTHUMP00000017730 molecular chaperone/chaperonin-binding protein parkin co-regulated gene protein
--------------------	---

Disease

- [Genetic Predisposition to Disease](#)

- [Infertility](#)
- [Leprosy](#)
- [Parkinson disease](#)
- [Parkinsonian Disorders](#)
- [Tobacco Use Disorder](#)
- [Tuberculosis](#)