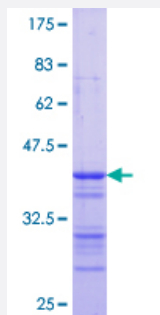


# GLYCTK (Human) Recombinant Protein (Q01)

Catalog # H00132158-Q01

Size 25 ug, 10 ug

## Applications



## Specification

<b>Product Description</b>	Human GLYCTK partial ORF ( NP_660305.2, 332 a.a. - 430 a.a.) recombinant protein with GST-tag at N-terminal.
<b>Sequence</b>	VLSAAMQGDVK SMAQFYGLLAHVARTRLTPSMAGASVEEDAQLHELAELQIPDLQLEEALETMAWGRGPVCLLAGGEPTVQLQGSGRGGRNQELALRV
<b>Host</b>	Wheat Germ (in vitro)
<b>Theoretical MW (kDa)</b>	36.63
<b>Preparation Method</b>	<a href="#">in vitro wheat germ expression system</a>
<b>Purification</b>	Glutathione Sepharose 4 Fast Flow
<b>Quality Control Testing</b>	12.5% SDS-PAGE Stained with Coomassie Blue.
<b>Storage Buffer</b>	50 mM Tris-HCl, 10 mM reduced Glutathione, pH=8.0 in the elution buffer.
<b>Storage Instruction</b>	Store at -80°C. Aliquot to avoid repeated freezing and thawing.
<b>Note</b>	Best use within three months from the date of receipt of this protein.

## Applications

- Enzyme-linked Immunoabsorbent Assay
- Western Blot (Recombinant protein)
- Antibody Production
- Protein Array

## Gene Info — GLYCTK

**Entrez GeneID** [132158](#)

**GeneBank Accession#** [NM\\_145262](#)

**Protein Accession#** [NP\\_660305.2](#)

**Gene Name** GLYCTK

**Gene Alias** GLYCTK1, HBEBP2, HBEBP4, HBeAgBP4A

**Gene Description** glycerate kinase

**Omim ID** [610516](#)

**Gene Ontology** [Hyperlink](#)

**Gene Summary** This locus encodes a member of the glycerate kinase type-2 family. The encoded enzyme catalyzes the phosphorylation of (R)-glycerate and may be involved in serine degradation and fructose metabolism. Decreased activity of the encoded enzyme may be associated with the disease D-glycemic aciduria. Alternatively spliced transcript variants have been described. [provided by RefSeq]

**Other Designations** CG9886-like|HBeAg binding protein 4|HBeAg-binding protein 2

## Pathway

- [Glycerolipid metabolism](#)
- [Glycine](#)
- [Glyoxylate and dicarboxylate metabolism](#)
- [Metabolic pathways](#)