

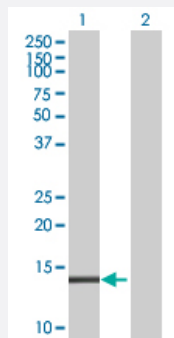
MaxPab®

TMEM42 MaxPab mouse polyclonal antibody (B01)

Catalog # H00131616-B01

Size 50 uL

Applications



Western Blot (Transfected lysate)

Western Blot analysis of TMEM42 expression in transfected 293T cell line ([H00131616-T01](#)) by TMEM42 MaxPab polyclonal antibody.

Lane 1: TMEM42 transfected lysate(17.49 KDa).

Lane 2: Non-transfected lysate.

Specification

Product Description	Mouse polyclonal antibody raised against a full-length human TMEM42 protein.
Immunogen	TMEM42 (NP_653239, 1 a.a. ~ 159 a.a) full-length human protein.
Sequence	MAERPGPPGGAVSATAYPDTPAEFPPHLQAGAMRRRFWGVFNCLCAGAFGALAAASAKLAFG SEVSMGLCVLGIIMASTNSLMWTFFSRGLSFSMSSAIASVTVTFSNILSSAFLGYVLYGECQEVL WWGGVFLILCGLTLHRKLPPTWKPLPHKQQ
Host	Mouse
Reactivity	Human
Quality Control Testing	Antibody reactive against mammalian transfected lysate.
Storage Buffer	No additive
Storage Instruction	Store at -20°C or lower. Aliquot to avoid repeated freezing and thawing.
Note	For IHC and IF applications, antibody purification with Protein A will be needed prior to use.

Applications

- Western Blot (Transfected lysate)

Western Blot analysis of TMEM42 expression in transfected 293T cell line ([H00131616-T01](#)) by TMEM42 MaxPab polyclonal antibody.

Lane 1: TMEM42 transfected lysate(17.49 KDa).

Lane 2: Non-transfected lysate.

[Protocol Download](#)

Gene Info — TMEM42

Entrez GeneID	131616
---------------	------------------------

GeneBank Accession#	NM_144638
---------------------	---------------------------

Protein Accession#	NP_653239
--------------------	---------------------------

Gene Name	TMEM42
-----------	--------

Gene Alias	MGC29956
------------	----------

Gene Description	transmembrane protein 42
------------------	--------------------------

Gene Ontology	Hyperlink
---------------	---------------------------

Other Designations	-
--------------------	---