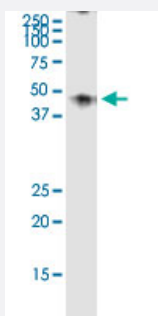


GPR175 (Human) IP-WB Antibody Pair

Catalog # H00131601-PW2

Size 1 Set

Applications



Immunoprecipitation of GPR175 transfected lysate using rabbit polyclonal anti-GPR175 and Protein A Magnetic Bead ([U0007](#)), and immunoblotted with mouse purified polyclonal anti-GPR175.

Specification

Product Description

This IP-WB antibody pair set comes with one antibody for immunoprecipitation and another to detect the precipitated protein in western blot.

Reactivity

Human

Quality Control Testing

Immunoprecipitation-Western Blot (IP-WB)

Immunoprecipitation of GPR175 transfected lysate using rabbit polyclonal anti-GPR175 and Protein A Magnetic Bead ([U0007](#)), and immunoblotted with mouse purified polyclonal anti-GPR175.

Supplied Product

Antibody pair set content:

1. Antibody pair for IP: rabbit polyclonal anti-GPR175 (300 ul)
2. Antibody pair for WB: mouse purified polyclonal anti-GPR175 (50 ug)

Storage Instruction

Store reagents of the antibody pair set at -20°C or lower. Please aliquot to avoid repeated freeze thaw cycle. Reagents should be returned to -20°C storage immediately after use.

Applications

- Immunoprecipitation-Western Blot

[Protocol Download](#)

Gene Info — GPR175

Entrez GeneID	131601
Gene Name	GPR175
Gene Alias	FLJ32197, TPRA40
Gene Description	G protein-coupled receptor 175
Omim ID	608336
Gene Ontology	Hyperlink
Other Designations	seven transmembrane domain orphan receptor transmembrane domain protein regulated in adipocytes 40 kDa