

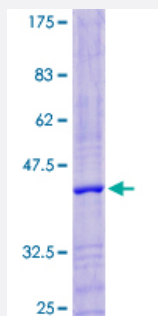
Full-Length

LYZL4 (Human) Recombinant Protein (P01)

Catalog # H00131375-P01

Size 25 ug, 10 ug

Applications



Specification

Product Description	Human LYZL4 full-length ORF (NP_653235.1, 1 a.a. - 146 a.a.) recombinant protein with GST-tag at N-terminal.
Sequence	MKASVVLSELLGYLVVPSGAYILGRCTVAKKLHDGGLDYFEGYSLENWVCLAYFESKFNPMAIYENT REGYTGFGLFQMRGSDWCGDHGRNRCHMSCSALLNPNEKTIKCAKTIVKGKEGMGAWPTWSR YCQYSDTLARWLDGCKL
Host	Wheat Germ (in vitro)
Theoretical MW (kDa)	42.8
Preparation Method	in vitro wheat germ expression system
Purification	Glutathione Sepharose 4 Fast Flow
Quality Control Testing	12.5% SDS-PAGE Stained with Coomassie Blue.
Storage Buffer	50 mM Tris-HCl, 10 mM reduced Glutathione, pH=8.0 in the elution buffer.
Storage Instruction	Store at -80°C. Aliquot to avoid repeated freezing and thawing.
Note	Best use within three months from the date of receipt of this protein.

Applications

- Enzyme-linked Immunoabsorbent Assay
- Western Blot (Recombinant protein)
- Antibody Production
- Protein Array

Gene Info — LYZL4

Entrez GeneID [131375](#)

GeneBank Accession# [NM_144634.2](#)

Protein Accession# [NP_653235.1](#)

Gene Name LYZL4

Gene Alias 1810009N24Rik, LYC4, MGC26768

Gene Description lysozyme-like 4

Gene Ontology [Hyperlink](#)

Gene Summary Lysozymes (see LYZ; MIM 153450), especially C-type lysozymes, are well-recognized bacteriolytic factors widely distributed in the animal kingdom and play a mainly protective role in host defense. LYZL4 is a member of a family of lysozyme-like genes (Zhang et al., 2005 [PubMed 16014814]).[supplied by OMIM]

Other Designations -