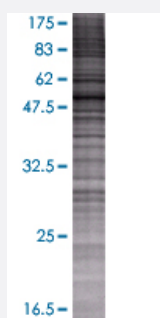


# CPNE4 293T Cell Transient Overexpression Lysate(Denatured)

Catalog # H00131034-T01

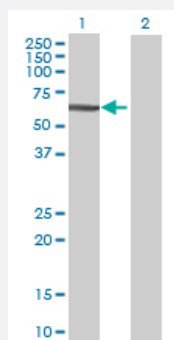
Size 100 uL

## Applications



### SDS-PAGE Gel

CPNE4 transfected lysate.



### Western Blot

Lane 1: CPNE4 transfected lysate ( 61.38 KDa)

Lane 2: Non-transfected lysate.

## Specification

**Transfected Cell Line** 293T

**Plasmid** pCMV-CPNE4 full-length

**Host** Human

**Theoretical MW (kDa)** 61.38

### Quality Control Testing

Transient overexpression cell lysate was tested with Anti-CPNE4 antibody ([H00131034-B01](#)) by Western Blots.

SDS-PAGE Gel

CPNE4 transfected lysate.

Western Blot

Lane 1: CPNE4 transfected lysate ( 61.38 KDa)

Lane 2: Non-transfected lysate.

**Storage Buffer**

1X Sample Buffer (50 mM Tris-HCl, 2% SDS, 10% glycerol, 300 mM 2-mercaptoethanol, 0.01% Bromophenol blue)

**Storage Instruction**

Store at -80°C. Aliquot to avoid repeated freezing and thawing.

## Applications

- Western Blot

## Gene Info — CPNE4

**Entrez GeneID**[131034](#)**GeneBank Accession#**[NM\\_130808.1](#)**Protein Accession#**[NP\\_570720.1](#)**Gene Name**

CPNE4

**Gene Alias**

COPN4, CPN4, MGC15604

**Gene Description**

copine IV

**Omim ID**[604208](#)**Gene Ontology**[Hyperlink](#)**Gene Summary**

Calcium-dependent membrane-binding proteins may regulate molecular events at the interface of the cell membrane and cytoplasm. This gene is one of several genes that encode a calcium-dependent protein containing two N-terminal type II C2 domains and an integrin A domain-like sequence in the C-terminus. [provided by RefSeq]

**Other Designations**

copine 8

## Disease

- [Tobacco Use Disorder](#)