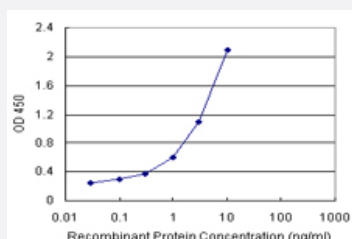


# TAF8 (Human) Matched Antibody Pair

Catalog # H00129685-AP21

Size 1 Set

## Applications



Sandwich ELISA detection sensitivity ranging from 0.1 ng/ml to 100 ng/ml.

## Specification

<b>Product Description</b>	This antibody pair set comes with a matched antibody pair to detect and quantify the protein level of human TAF8.
<b>Reactivity</b>	Human
<b>Quality Control Testing</b>	Standard curve using recombinant protein ( H00129685-P01 ) as an analyte. Sandwich ELISA detection sensitivity ranging from 0.1 ng/ml to 100 ng/ml.
<b>Supplied Product</b>	Antibody pair set content: 1. Capture antibody: rabbit MaxPab® affinity purified polyclonal anti-TAF8 (100 ug) 2. Detection antibody: mouse purified polyclonal anti-TAF8 (20 ug) *Reagents are sufficient for at least 1-2 x 96 well plates using recommended protocols.
<b>Storage Instruction</b>	Store reagents of the antibody pair set at -20°C or lower. Please aliquot to avoid repeated freeze thaw cycle. Reagents should be returned to -20°C storage immediately after use.

## Applications

- ELISA Pair (Recombinant protein)

[Protocol Download](#)

## Gene Info — TAF8

**Entrez GeneID** [129685](#)

**Gene Name** TAF8

**Gene Alias** 43, FLJ32821, II, TAF, TAFI43, TBN

**Gene Description** TAF8 RNA polymerase II, TATA box binding protein (TBP)-associated factor, 43kDa

**Omim ID** [609514](#)

**Gene Ontology** [Hyperlink](#)

**Gene Summary** This gene encodes one of several TATA-binding protein (TBP)-associated factors (TAFs), which are integral subunits of the general transcription factor complex TFIID. TFIID recognizes the core promoter of many genes and nucleates the assembly of a transcription preinitiation complex containing RNA polymerase II and other initiation factors. The protein encoded by this gene contains an H4-like histone fold domain, and interacts with several subunits of TFIID including TBP and the histone-fold protein TAF10. Alternatively spliced transcript variants have been described, but their biological validity has not been determined. [provided by RefSeq]

**Other Designations** OTTHUMP00000016392|TAF(II)43|TAF8 RNA polymerase II, TATA box binding protein (TBP)-associated factor, 50 kD|TATA box binding protein (TBP)-associated factor, RNA polymerase II, A, 45/50kDa|TBP-associated factor 8|TBP-associated factor TAFI43|TBP-associated factor

## Disease

- [Alzheimer disease](#)
- [Cerebral Amyloid Angiopathy](#)
- [Genetic Predisposition to Disease](#)
- [Neuroblastoma](#)