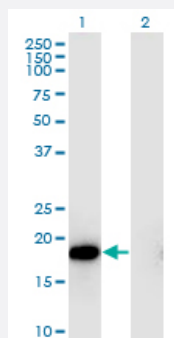


# HSPB6 monoclonal antibody (M03), clone 6A4

Catalog # H00126393-M03

Size 100 ug

## Applications

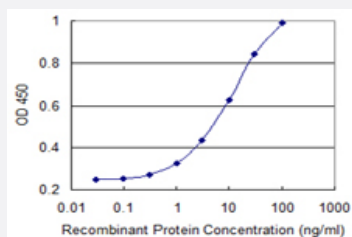


### Western Blot (Transfected lysate)

Western Blot analysis of HSPB6 expression in transfected 293T cell line by HSPB6 monoclonal antibody (M03), clone 6A4.

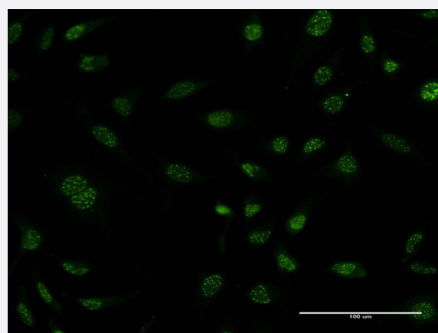
Lane 1: HSPB6 transfected lysate (17.2 KDa).

Lane 2: Non-transfected lysate.



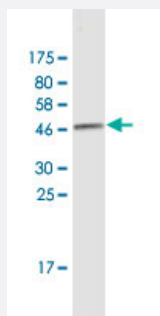
### Sandwich ELISA (Recombinant protein)

Detection limit for recombinant GST tagged HSPB6 is 0.3 ng/ml as a capture antibody.



### Immunofluorescence

Immunofluorescence of monoclonal antibody to HSPB6 on HeLa cell . [antibody concentration 10 ug/ml]



Western Blot detection against Immunogen (43.6 KDa) .

## Specification

<b>Product Description</b>	Mouse monoclonal antibody raised against a full-length recombinant HSPB6.
<b>Immunogen</b>	HSPB6 (AAH68046.1, 1 a.a. ~ 160 a.a) full-length recombinant protein with GST tag. MW of the GST tag alone is 26 KDa.
<b>Sequence</b>	MEIPVPVQPSWLRRASAPLLGLSAPGRLFDQRFGEGLLEAELAALCPTTLAPYYLRAPSVALPVA QVPTDPGHFSVLLDVKHFSPEEIAVKVVGHEHVEVHARHEERPDEHGFVAREFHRRYRLPPGVDP AAVTSALSPEGVLSIQAAPASAQAPPPAAAK
<b>Host</b>	Mouse
<b>Reactivity</b>	Human
<b>Interspecies Antigen Sequence</b>	Mouse (88); Rat (89)
<b>Isotype</b>	IgG2a Lambda
<b>Quality Control Testing</b>	Antibody Reactive Against Recombinant Protein. Western Blot detection against Immunogen (43.6 KDa) .
<b>Storage Buffer</b>	In 1x PBS, pH 7.4
<b>Storage Instruction</b>	Store at -20°C or lower. Aliquot to avoid repeated freezing and thawing.

## Applications

### ● Western Blot (Transfected lysate)

Western Blot analysis of HSPB6 expression in transfected 293T cell line by HSPB6 monoclonal antibody (M03), clone 6A4.

Lane 1: HSPB6 transfected lysate(17.2 KDa).

Lane 2: Non-transfected lysate.

[Protocol Download](#)

- Western Blot (Recombinant protein)

[Protocol Download](#)

- Sandwich ELISA (Recombinant protein)

Detection limit for recombinant GST tagged HSPB6 is 0.3 ng/ml as a capture antibody.

[Protocol Download](#)

- ELISA

- Immunofluorescence

Immunofluorescence of monoclonal antibody to HSPB6 on HeLa cell . [antibody concentration 10 ug/ml]

## Gene Info — HSPB6

Entrez GeneID	<a href="#">126393</a>
GeneBank Accession#	<a href="#">BC068046.1</a>
Protein Accession#	<a href="#">AAH68046.1</a>
Gene Name	HSPB6
Gene Alias	FLJ32389, Hsp20
Gene Description	heat shock protein, alpha-crystallin-related, B6
Omim ID	<a href="#">610695</a>
Gene Ontology	<a href="#">Hyperlink</a>
Gene Summary	HSPB6 is associated with actin (see MIM 102540) and modulates smooth muscle relaxation (Tessier et al., 2003 [PubMed 12842460]).[supplied by OMIM]
Other Designations	-

## Disease

- [Cardiomyopathy](#)