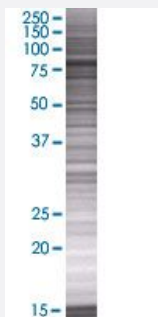


ALDH16A1 293T Cell Transient Overexpression Lysate(Denatured)

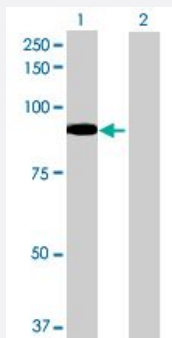
Catalog # H00126133-T01 Size 100 uL

Applications



SDS-PAGE Gel

ALDH16A1 transfected lysate.



Western Blot

Lane 1: ALDH16A1 transfected lysate (88.33 KDa)

Lane 2: Non-transfected lysate.

Specification

Transfected Cell Line	293T
Plasmid	pCMV-ALDH16A1 full-length
Host	Human
Theoretical MW (kDa)	88.33
Interspecies Antigen Sequence	Mouse (82); Rat (81)

Quality Control Testing

Transient overexpression cell lysate was tested with Anti-ALDH16A1 antibody ([H00126133-B01](#)) by Western Blots.
SDS-PAGE Gel
ALDH16A1 transfected lysate.
Western Blot
Lane 1: ALDH16A1 transfected lysate (88.33 KDa)
Lane 2: Non-transfected lysate.

Storage Buffer

1X Sample Buffer (50 mM Tris-HCl, 2% SDS, 10% glycerol, 300 mM 2-mercaptoethanol, 0.01% Bromophenol blue)

Storage Instruction

Store at -80°C. Aliquot to avoid repeated freezing and thawing.

Applications

- Western Blot

Gene Info — ALDH16A1

Entrez GeneID[126133](#)**GeneBank Accession#**[NM_153329.2](#)**Protein Accession#**[NP_699160.1](#)**Gene Name**

ALDH16A1

Gene Alias

MGC10204

Gene Description

aldehyde dehydrogenase 16 family, member A1

Gene Ontology[Hyperlink](#)**Gene Summary**

This gene encodes a member of the aldehyde dehydrogenases superfamily. The family members act on aldehyde substrates and use nicotinamide adenine dinucleotide phosphate (NADP) as a cofactor. This gene is conserved in chimpanzee, dog, cow, mouse, rat, and zebrafish. Alternatively spliced transcript variants encoding different isoforms have been found for this gene. [provided by RefSeq]

Other Designations

-