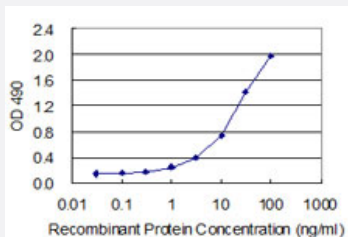


CALR3 (Human) Matched Antibody Pair

Catalog # H00125972-AP22

Size 1 Set

Applications



Sandwich ELISA detection sensitivity ranging from 0.3 ng/ml to 100 ng/ml.

Specification

| | |
|--------------------------------------|--|
| Product Description | This antibody pair set comes with a matched antibody pair to detect and quantify the protein level of human CALR3. |
| Reactivity | Human |
| Interspecies Antigen Sequence | Mouse (83); Rat (83) |
| Quality Control Testing | Standard curve using recombinant protein (H00125972-P01) as an analyte. Sandwich ELISA detection sensitivity ranging from 0.3 ng/ml to 100 ng/ml. |
| Supplied Product | Antibody pair set content: 1. Capture antibody: rabbit MaxPab® affinity purified polyclonal anti-CALR3 (100 ug) 2. Detection antibody: mouse purified polyclonal anti-CALR3 (20 ug) *Reagents are sufficient for at least 1-2 x 96 well plates using recommended protocols. |
| Storage Instruction | Store reagents of the antibody pair set at -20°C or lower. Please aliquot to avoid repeated freeze thaw cycle. Reagents should be returned to -20°C storage immediately after use. |

Applications

- ELISA Pair (Recombinant protein)

[Protocol Download](#)

Gene Info — CALR3

| | |
|---------------|------------------------|
| Entrez GeneID | 125972 |
|---------------|------------------------|

| | |
|-----------|-------|
| Gene Name | CALR3 |
|-----------|-------|

| | |
|------------|--------------------------|
| Gene Alias | CRT2, FLJ25355, MGC26577 |
|------------|--------------------------|

| | |
|------------------|----------------|
| Gene Description | calreticulin 3 |
|------------------|----------------|

| | |
|---------|------------------------|
| Omim ID | 611414 |
|---------|------------------------|

| | |
|---------------|---------------------------|
| Gene Ontology | Hyperlink |
|---------------|---------------------------|

| | |
|--------------|---|
| Gene Summary | Calreticulins, such as CALR3, are Ca(2+)-binding chaperones localized mainly in the endoplasmic/sarcoplasmic reticulum Persson et al. (2002) [PubMed 12384296].[supplied by OMIM] |
|--------------|---|

| | |
|--------------------|----------------|
| Other Designations | calreticulin 2 |
|--------------------|----------------|