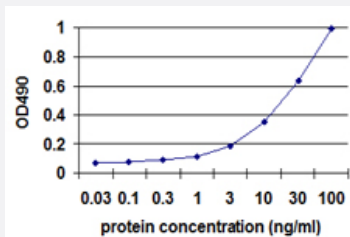


CALR3 (Human) Matched Antibody Pair

Catalog # H00125972-AP21

Size 1 Set

Applications



Sandwich ELISA detection sensitivity ranging from 0.3 ng/ml to 100 ng/ml.

Specification

Product Description	This antibody pair set comes with a matched antibody pair to detect and quantify the protein level of human CALR3.
Reactivity	Human
Interspecies Antigen Sequence	Mouse (83); Rat (83)
Quality Control Testing	Standard curve using recombinant protein (H00125972-P01) as an analyte. Sandwich ELISA detection sensitivity ranging from 0.3 ng/ml to 100 ng/ml.
Supplied Product	Antibody pair set content: 1. Capture antibody: rabbit MaxPab® affinity purified polyclonal anti-CALR3 (100 ug) 2. Detection antibody: mouse polyclonal anti-CALR3 (40 ul) *Reagents are sufficient for at least 3-5 x 96 well plates using recommended protocols.
Storage Instruction	Store reagents of the antibody pair set at -20°C or lower. Please aliquot to avoid repeated freeze thaw cycle. Reagents should be returned to -20°C storage immediately after use.

Applications

- ELISA Pair (Recombinant protein)

[Protocol Download](#)

Gene Info — CALR3

Entrez GeneID	125972
Gene Name	CALR3
Gene Alias	CRT2, FLJ25355, MGC26577
Gene Description	calreticulin 3
Omim ID	611414
Gene Ontology	Hyperlink
Gene Summary	Calreticulins, such as CALR3, are Ca(2+)-binding chaperones localized mainly in the endoplasmic/sarcoplasmic reticulum Persson et al. (2002) [PubMed 12384296].[supplied by OMIM]
Other Designations	calreticulin 2