

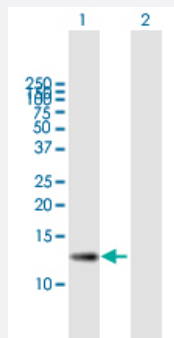
MaxPab®

ZSWIM7 purified MaxPab mouse polyclonal antibody (B01P)

Catalog # H00125150-B01P

Size 50 ug

Applications



Western Blot (Transfected lysate)

Western Blot analysis of ZSWIM7 expression in transfected 293T cell line ([H00125150-T01](#)) by ZSWIM7 MaxPab polyclonal antibody.

Lane 1: ZSWIM7 transfected lysate(15.4 KDa).

Lane 2: Non-transfected lysate.

Specification

Product Description	Mouse polyclonal antibody raised against a full-length human ZSWIM7 protein.
Immunogen	ZSWIM7 (AAI53133.1, 1 a.a. ~ 140 a.a) full-length human protein.
Sequence	MAVVLPVVEELLSEMAAAVQESARIPDEYLLSLKFLFGSSATQALDLVDRQSITLISSPSGRRVY QVLGSSSKTYTCLASCHYCSCPAFAFSVLRKSDSILCKHLLAVYLSQVMRTCQQLSVSDKQLTDIL LMEKKQEA
Host	Mouse
Reactivity	Human
Interspecies Antigen Sequence	Mouse (81); Rat (85)
Quality Control Testing	Antibody reactive against mammalian transfected lysate.
Storage Buffer	In 1x PBS, pH 7.4
Storage Instruction	Store at -20°C or lower. Aliquot to avoid repeated freezing and thawing.

Applications

- Western Blot (Transfected lysate)

Western Blot analysis of ZSWIM7 expression in transfected 293T cell line ([H00125150-T01](#)) by ZSWIM7 MaxPab polyclonal antibody.

Lane 1: ZSWIM7 transfected lysate(15.4 KDa).

Lane 2: Non-transfected lysate.

[Protocol Download](#)

Gene Info — ZSWIM7

Entrez GeneID	125150
GeneBank Accession#	BC153132.1
Protein Accession#	AA153133.1
Gene Name	ZSWIM7
Gene Alias	SWS1
Gene Description	zinc finger, SWIM-type containing 7
Gene Ontology	Hyperlink
Gene Summary	O
Other Designations	OTTHUMP00000065573 SWIM domain containing Srs2 interacting protein 1 SWIM-domain containing Srs2 interacting protein 1