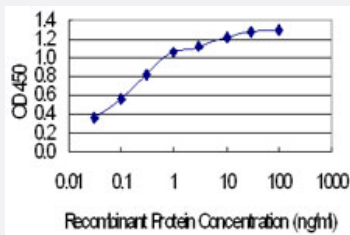


# FAM100A monoclonal antibody (M05), clone 6D9

Catalog # H00124402-M05

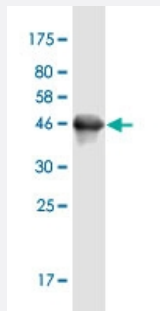
Size 100 ug

## Applications



### Sandwich ELISA (Recombinant protein)

Detection limit for recombinant GST tagged FAM100A is 0.03 ng/ml as a capture antibody.



Western Blot detection against Immunogen (45.4 KDa) .

## Specification

Product Description	Mouse monoclonal antibody raised against a full-length recombinant FAM100A.
Immunogen	FAM100A (NP_660296.1, 1 a.a. ~ 177 a.a) full-length recombinant protein with GST tag. MW of the GST tag alone is 26 KDa.
Sequence	MSVNMDELKHQVMINQFVLTAGCAADQAKQLLQAAHWQFETALSAFFQETNIPYSHHHHQQMMCT PANTPATPPNFPDALTMFSRLKASESFHSGSGSGSPMAATATSPPPHFPHAATSSSAASSWPTA ASPPGGPQHHQPQPPLWTPTPPSPASDWPLAPQQATSEPRAPAMEAER
Host	Mouse
Reactivity	Human

Interspecies Antigen Sequence	Mouse (91)
Isotype	IgG2a Kappa
Quality Control Testing	Antibody Reactive Against Recombinant Protein. Western Blot detection against Immunogen (45.4 KDa) .
Storage Buffer	In 1x PBS, pH 7.4
Storage Instruction	Store at -20°C or lower. Aliquot to avoid repeated freezing and thawing.

## Applications

- Western Blot (Recombinant protein)

[Protocol Download](#)

- Sandwich ELISA (Recombinant protein)

Detection limit for recombinant GST tagged FAM100A is 0.03 ng/ml as a capture antibody.

[Protocol Download](#)

- ELISA

## Gene Info — FAM100A

Entrez GeneID	<a href="#">124402</a>
GeneBank Accession#	<a href="#">NM_145253.1</a>
Protein Accession#	<a href="#">NP_660296.1</a>
Gene Name	FAM100A
Gene Alias	FLJ31223, FLJ32185, PP11303
Gene Description	family with sequence similarity 100, member A
Gene Ontology	<a href="#">Hyperlink</a>
Gene Summary	O
Other Designations	hypothetical protein LOC124402