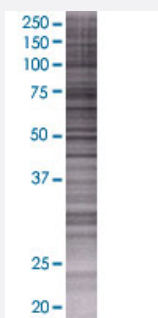


CMTM3 293T Cell Transient Overexpression Lysate(Denatured)

Catalog # H00123920-T01

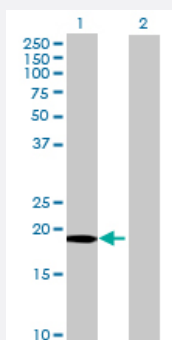
Size 100 uL

Applications



SDS-PAGE Gel

CMTM3 transfected lysate.



Western Blot

Lane 1: CMTM3 transfected lysate (20.13 KDa)

Lane 2: Non-transfected lysate.

Specification

Transfected Cell Line	293T
Plasmid	pCMV-CMTM3 full-length
Host	Human
Theoretical MW (kDa)	20.13
Interspecies Antigen Sequence	Mouse (88); Rat (86)

Quality Control Testing

Transient overexpression cell lysate was tested with Anti-CMTM3 antibody ([H00123920-B01](#)) by Western Blots.
SDS-PAGE Gel
CMTM3 transfected lysate.
Western Blot
Lane 1: CMTM3 transfected lysate (20.13 KDa)
Lane 2: Non-transfected lysate.

Storage Buffer

1X Sample Buffer (50 mM Tris-HCl, 2% SDS, 10% glycerol, 300 mM 2-mercaptoethanol, 0.01% Bromophenol blue)

Storage Instruction

Store at -80°C. Aliquot to avoid repeated freezing and thawing.

Applications

- Western Blot

Gene Info — CMTM3

Entrez GeneID

[123920](#)

GeneBank Accession#

[NM_144601](#)

Protein Accession#

[NP_653202](#)

Gene Name

CMTM3

Gene Alias

BNAS2, CKLF3, FLJ31762, MGC51956

Gene Description

CKLF-like MARVEL transmembrane domain containing 3

Omim ID

[607886](#)

Gene Ontology

[Hyperlink](#)

Gene Summary

This gene belongs to the chemokine-like factor gene superfamily, a novel family that is similar to the chemokine and the transmembrane 4 superfamilies of signaling molecules. This gene is one of several chemokine-like factor genes located in a cluster on chromosome 16. Alternatively spliced transcript variants containing different 5' UTRs, but encoding the same protein, have been identified. [provided by RefSeq]

Other Designations

OTTHUMP00000174790|chemokine-like factor super family 3|chemokine-like factor superfamily 3